



Washington
University in St. Louis
BROWN SCHOOL



CHILD
Global Research Fellowship
Washington University in St. Louis |
Makerere University



Researcher Resilience Training
(RRT)

Capacity Building 2021 Report


ichad
Brown School

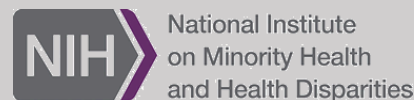
SECURING OUR
CHILDREN'S
FUTURE TODAY

Table of Contents

Letter from the Director	2
Capacity Building at ICHAD	3
Bi-Directional Learning for Center Capacity Building	3
Capacity Building through Research Training Programs	5
Mentorship	7
Program Overviews and Trainee Profiles	8
CHILD-Global Research Fellowship.....	8
Researcher Resilience Training Program.....	17
LEAD Global Training Program	23
Capacity Building Leadership	31
Executive Steering Committee	31
Training Advisory Committee	34

Capacity Building Partners

ICHAD's Capacity Building Training Programs are supported by the following institutions committed to the advancement of researchers from diverse backgrounds.



Letter from the Director

Dear Colleagues and Friends,

For more than 15 years, the International Center for Child Health and Development (ICHAD) and the SMART Africa Center have been committed to capacity building in every facet of our research projects in Sub-Saharan Africa. We understand that on-going bi-directional learning is essential to ensure a strong infrastructure and a growing pipeline of social science researchers in the Global South. Despite the continued challenges posed by the COVID-19 pandemic, 2021 was a year of exceptional growth and productivity for our staff and for the thirty training fellows in our three NIH-funded training programs: CHILD-Global Research Fellowship (CHILD-GRF), LEAD Global Training Program (LEAD), and Researcher Resilience Training Program (RRT).



For more than 15 years, the International Center for Child Health and Development (ICHAD) and the SMART Africa Center have been committed to capacity building in every facet of our research projects in Sub-Saharan Africa. We understand that on-going bi-directional learning is essential to ensure a strong infrastructure and a growing pipeline of social science researchers in the Global South. Despite the continued challenges posed by the COVID-19 pandemic, 2021 was a year of exceptional growth and productivity for our staff and for the thirty training fellows in our three NIH-funded training programs: CHILD-Global Research Fellowship (CHILD-GRF), LEAD Global Training Program (LEAD), and Researcher Resilience Training Program (RRT).

The adjustments we had to make during the pandemic revealed the enduring benefits of cross-program collaboration. Our fellows and alumni have published 278 manuscripts this year, and have been awarded funding for 24 research and educational grants. There has been unprecedented cross-program collaboration, with 34 manuscripts co-authored by trainees or alumni from more than one training program. And our impact extended beyond our own team and training programs. In observance of Global Mental Health Day, ICHAD was invited to share the successes and best practices of the RRT Program to support child and adolescent mental health researchers primarily of African descent with program officials at the National Institute of Mental Health. It was a unique opportunity to share our trainees' stories of resilience and achievement with our funding partner. Looking ahead, we anticipate significantly growing our training program portfolio, further broadening our capacity building impact through new collaborations with networks of research trainees, faculty mentors, and institutions across the United States, Sub-Saharan Africa, and into other regions of the globe. In this current era of uncertainty, our leadership team – ICHAD's Co-directors, Drs. Ozge Sensoy Bahar, and Proscovia Nabunya– and I have much to be hopeful about and are grateful for the support and partnership of our collaborators.

In partnership,

Fred Ssewamala

William E. Gordon Distinguished Professor

Associate Dean for Transdisciplinary Faculty Research

Professor of Medicine, Washington University School of Medicine

Director and Founder, International Center for Child Health and Development (ICHAD)

Director, SMART Africa Center

Brown School, Washington University in St. Louis

ICHAD Annual Report

Capacity Building is one of ICHAD's four focus areas. To learn more about ICHAD's accomplishments in 2021, please view the ICHAD Annual Report available at <https://ichad.wustl.edu/wp-content/uploads/2022/01/ICHAD-Annual-Report-2021.pdf>.

Capacity Building at ICHAD

Capacity building is one of ICHAD's primary focus areas to fulfill the Center's commitment to develop and implement contextually relevant evidence-based interventions to support children, families, and communities in addressing the unique challenges they experience. ICHAD provides trainings, mentorship opportunities and fellowships to students, team members, and scholars across the globe. By leveraging our global research studies, university affiliations, and institutional partnerships, ICHAD promotes bi-directional learning between the United States and Sub-Saharan Africa, and beyond.

We build capacity through several programs and initiatives:

- Cultivating a pipeline for educational and professional advancement among ICHAD staff and student employees in the United States and Uganda
- Providing fellowships to students, team members, and scholars with a focus on Sub-Saharan Africa and the United States through research training programs funded by the US Department of Health Human Services National Institutes of Health (NIH):
 - CHILD-Global Research Fellowship (CHILD-GRF)
 - Researcher Resilience Training Program (RRT)
 - LEAD Global Training Program (LEAD)
- Awarding the annual Junior Scholar Travel Award program for young investigators in Uganda (when travel is feasible).

ICHAD's Mission and Focus Areas

To contribute to the reduction of poverty and improvement of public health outcomes for children, adolescents, and families in low-resource communities, particularly those in Sub-Saharan Africa and other developing nations through:

- Innovative applied intervention research
- Raising public awareness and support for economic empowerment interventions
- Informing public policy and programming
- Capacity building opportunities for a new generation of scholars

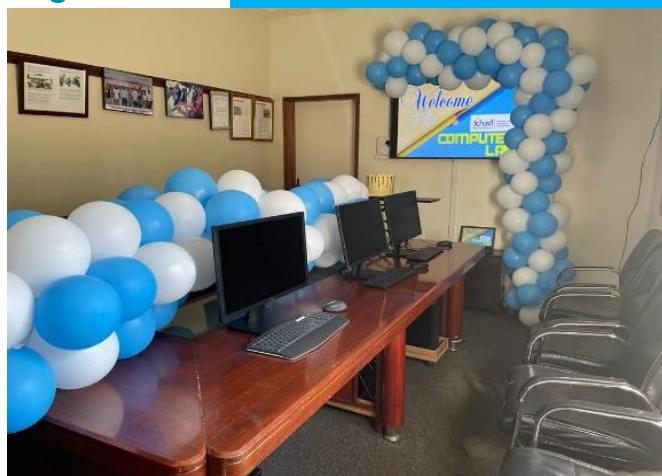


Bi-Directional Learning for Center Capacity Building

With offices in Uganda and the United States, and projects in Ghana and Kenya, ICHAD is uniquely positioned to foster bi-directional learning and collaboration between our offices and staff members.

ICHAD Staff Training and Professional Development

ICHAD's unique success and continued growth on two continents is in large part due to our commitment to staff development at every stage. To build on the potential of our ambitious and talented staff and student workers, we have built a robust staff training and professional development curriculum. The curriculum offers a combination of technical skill building to enhance staff capabilities in their roles, as well as professional development to provide skills and knowledge for individual career advancement. These sessions utilize the expertise of leadership and colleagues from within ICHAD and from our implementing partners. A list of training offered this year include:



The ICHAD Masaka office opened a new computer center to improve efficiency and productivity

Staff Training Topics in 2021	Facilitator/Trainer
Good Clinical Practice Training on Human Subjects Protection	Grace Kigozi, Rakai Health Sciences Program, Uganda; and Andrea Morris, Manager, WashU Office of the Vice Chancellor for Research (OVCR)
Computer Refresher Trainings	Robert Kasumba, Graduate Student Assistant, ICHAD USA, and Claire Najjuuko, IT Manager, ICHAD Uganda
Qualitative Interviews Translation Training	Josephine Nabayinda, PhD Student/Research Associate, ICHAD USA
Confidentiality Refresher Training	Ritah Barungi, Human Resource Specialist, ICHAD Uganda
Qualitative Coding/Analysis Training	Dr. James Mugisha, Kyambogo University
Field Experience	Edward Nsubuga, Study Coordinator, and Florence Namuli, Deputy Study Coordinator, ICHAD Uganda
Research Dissemination and Publications	Dr. Proscovia Nabunya, ICHAD Co-Director
Qualitative Interview Training	Dr. Ozge Sensoy Bahar and Dr. Proscovia Nabunya, ICHAD Co-Directors
Implementing Matched Savings Accounts	Jennifer Nattabi, PhD Student/Research Associate, ICHAD USA
Cognitive Interview Trainings and Scoring	Dr. April Thames, Global Affiliate, University of California Los Angeles
PowerPoint and Canva Workshop	Bethel Mandefro, Center Coordinator, ICHAD USA
Quantitative Data Analysis Training	Dr. William Byansi, Postdoctoral Research Associate, ICHAD USA
Data Collection Using RedCAP	Vicent Ssentumbwe, Data Manager, ICHAD Uganda
Pill Counting and Data Collection	Phionah Namatovu, Research Coordinator, ICHAD Uganda, and Dr. Samuel Kizito, PhD Student/Research Associate, ICHAD USA
Good Clinical Laboratory Practice	Mildmay-Uganda and Makerere University



ICHAD Uganda staff after a Good Clinical Laboratory Practice training session in April, 2021 with the Mildmay Uganda in Masaka



Mrs. Grace Kigozi facilitates a Good Clinical Practice refresher training with ICHAD Uganda staff and qualitative translators, Masaka, Uganda

Support for a New Generation of Researchers

One of the growth markers for ICHAD's capacity building impact has been the increased number of sponsored students at Washington University, building an informal pipeline for a new generation of researchers, leaders, and practitioners. In the academic year 2021-2022, six staff members from the ICHAD Uganda field office were admitted into PhD or MSW/MPH programs in the U.S. While in St. Louis, ICHAD students work as research assistants or fellows, and are an integral part of the U.S.-based research activities. The opportunity to work with ICHAD during their graduate education provides students with hands-on experience to contribute to research coordination, data analysis, manuscript preparation, conference presentations, publications, and more.



We are particularly proud of the educational achievements and advancements of our staff in 2021, which included:

- Six members of ICHAD Uganda staff were admitted to doctoral and masters programs at institutions in the USA
- Six members of ICHAD Uganda graduated with master's or bachelor's degrees or diplomas
- Three existing ICHAD staff received a promotion or took on newly created roles
- ICHAD Uganda appointed six new hires, increasing staff by 13%



Capacity Building through Research Training Programs

ICHAD has three NIH-funded research training programs: [R25 Researcher Resilience Training Program \(RRT\)](#), [T37 LEAD Global Training Program \(LEAD\)](#) and [D43 CHILD-Global Research Fellowship \(CHILD-GRF\)](#). They are funded by NIH institutions and share the fundamental aim to provide early-career scientists from underrepresented backgrounds with the mentorship, skills, and hands-on experiences needed to become principal investigators (PIs) on externally funded intervention studies and to lead multi-disciplinary, collaborative research teams. Each program features mentorship and a unique summer training component. Our trainees' research interests span a variety of topics in both the United States and global settings including health disparities, mental health, child and adolescent health, economic development, and HIV/AIDS in resource-constrained communities.

Publications at a Glance



278

Manuscripts published by training program fellows and alumni in 2021



48



Conference and workshop presentations by training program fellows and alumni in 2021



34

Manuscripts published featuring collaboration among trainees across our training programs

Overview of Research Training Programs

	 Researcher Resilience Training (RRT) https://sites.wustl.edu/rtraining	 LEAD Global Training Program https://sites.wustl.edu/lead	 CHILD Global Research Fellowship Washington University in St. Louis Makerere University https://sites.wustl.edu/childgrf
Directors	Mary McKay, Fred Ssewamala, Sean Joe	Fred Ssewamala, Patricia Cavazos-Rehg	Fred Ssewamala, Mary McKay, Noeline Nakasujja
Research Focus	Child and adolescent mental health in low-resource settings	Global health disparities with a focus on mental health	Child and adolescent HIV and mental health
Region	U.S. and Sub-Saharan Africa	U.S. and Sub-Saharan Africa	Uganda
Number of Fellows	7-9 fellows per year	7-9 short term fellows per year; 1-2 postdoctoral fellows per year	7 fellows (Year 1); 12 fellows (Year 2); 18 fellows (Year 3)
Career Level	PhD, MD, or other doctoral students, postdocs, fellows, residents, early career faculty (advanced degree completed within 5 years of program start)		Advanced graduate-level student through early career faculty (advanced degree completed within 5 years of program start)
Eligibility Requirements	No citizenship requirement, but must be affiliated with a U.S.-based institution; priority given to those of African decent	U.S. citizen; Priority given to those from under-represented minority	Ugandan national
Duration	1-year appointment (April-March)	10-week appointment (June-August)	3-year appointment (begins each June)
Original Timeline	1 week in person; on-going research/mentorship for 1 or 2 years	4 weeks in the U.S.; 6 weeks at a SSA research site	6-week summer training in U.S. over a three-year period; on-going research/mentorship
Funded by	National Institute of Mental Health: R25MH118935	National Institute on Minority Health and Health Disparities: T37MD014218	Fogarty International Center and National Institute for Child Health and Development: D43TW011541

Each training program has a unique research focus area and target candidate population. Originally designed to incorporate in-person, hands-on training and research experiences, our programs were implemented virtually once again in 2021, via Zoom, due to the continued COVID-19 restrictions and uncertainty. Each of the 30 trainees were matched with a mentor from Washington University in St. Louis, Makerere University in Kampala, Uganda, or from one of our numerous partner institutions to develop a research project, analyze data, draft a manuscript, or apply for their own research funding.

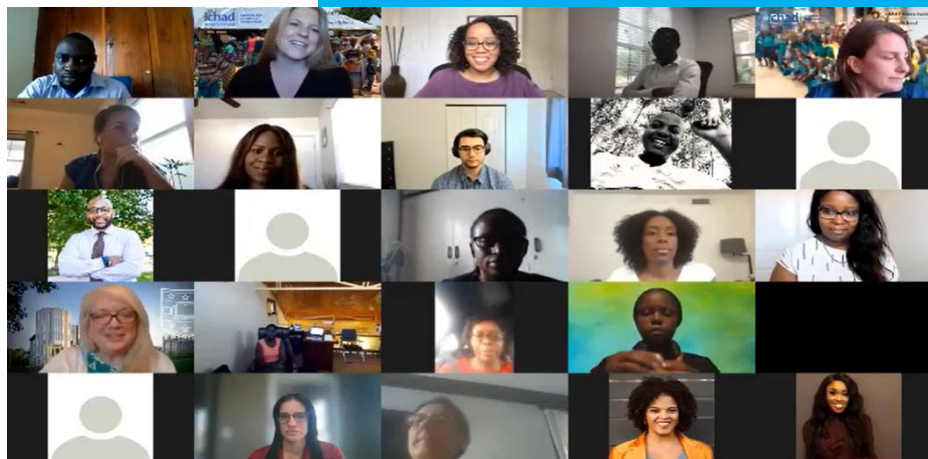
Building on the success of the virtual programming adapted in response to the COVID-19 pandemic in 2020, the summer training curriculum featured ten weeks of training sessions consisting of:

- Workshops, webinars, and discussion panels
- Informational career talks
- Program specific check-in meetings
- Meetings with mentors
- Trainee-led sessions
- Publication working meetings
- Social hours with trainees across Washington University in St. Louis campuses
- Pilot award peer review sessions
- Statistical consultation hours

In response to feedback from trainees, the 2021 curriculum featured more peer-to-peer learning and professional networking opportunities and featured more interactive panel discussions. Each trainee gave final presentations, sharing their progress and next steps for the research they initiated with their mentors. In the full expression of capacity building, the majority of trainees continue to work with the mentors beyond the formal training period, building on the work initiated in the training program and maintaining and growing their professional networks.

"I'm a better researcher because of this program."
– RRT Fellow

"This program created exposure to an array of critical information for succeeding in the academy (i.e. NIH study section review, R data analysis programing, NIH program officer presentations, etc.) that one might not be exposed to early in the career trajectory otherwise."
– LEAD Trainee



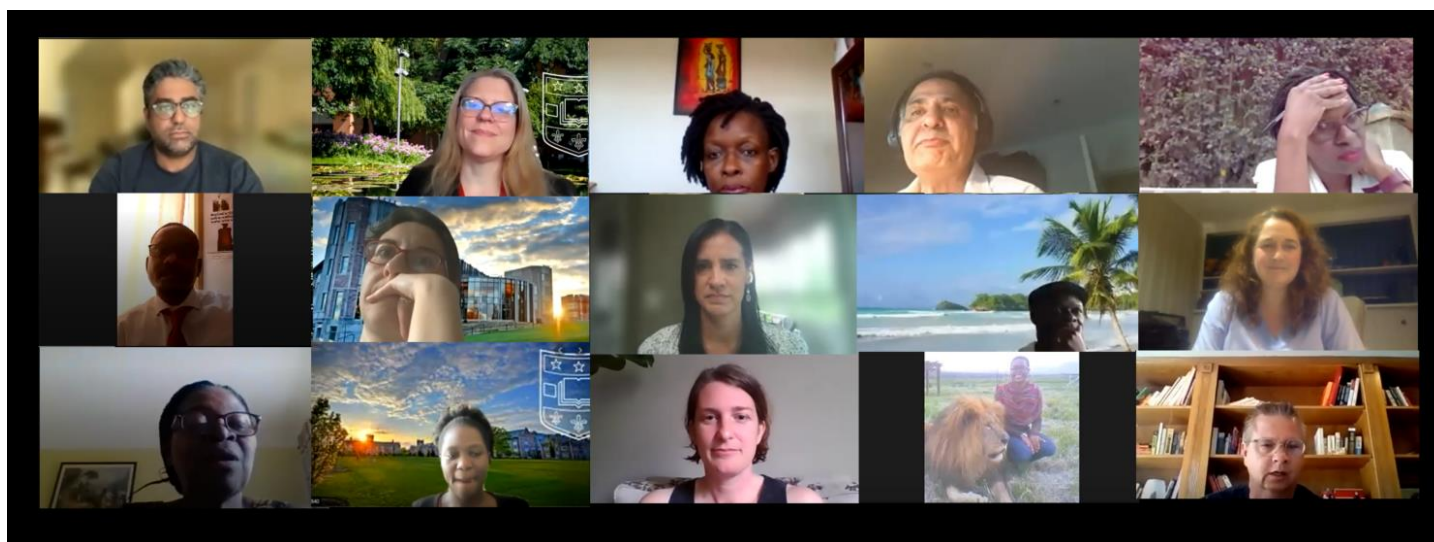
Trainees from the CHILD-GRF, LEAD, and RRT training programs meet via Zoom for orientation with program directors and staff



Mentorship

Mentorship is the cornerstone of our training programs. Trainees were matched with a faculty mentor with active research projects in their field that aligned with the interests and career goals of each trainee. Trainees and mentors met via Zoom at least weekly. They worked together to create an Individual Development Plan (IDP) at the beginning of their training appointment. They used the IDP as a dynamic guiding document to define and monitor progress towards their research, training, and professional development goals.

Please see program sections for complete lists of mentors.



2021 Mentor Orientation Meeting on Zoom with Program Leaders and Staff

Program Overviews and Trainee Profiles

CHILD-Global Research Fellowship (CHILD-GRF)



CHILD
Global Research Fellowship
Washington University in St. Louis |
Makerere University

Co-Directors

Mary McKay, PhD	Vice Provost for Interdisciplinary Initiatives, Washington University in St. Louis
Noeline Nakasujja, MBChB, PhD	Associate Professor of Psychiatry, Chair, College of Health Sciences, Makerere University
Fred Ssewamala, PhD	William E. Gordon Distinguished Professor, Associate Dean for Transdisciplinary Faculty Research, Director and Founder, ICHAD, Director, SMART Africa Center, Brown School, Washington University in St. Louis

Mentors

Dickens H. Akena, PhD	Senior Lecturer, Psychiatry, College of Health Sciences, Makerere University
Paul Bukuluki, PhD	Lecturer, Social Work & Social Administration, School of Social Sciences, Makerere University
David Kaawa-Mafigiri, PhD	Lecturer, Social Work & Social Administration, School of Social Sciences, Makerere University
Eugene Kinyanda, MBChB, MMed, PhD	Head, Mental Health Project, Medical Research Council/Uganda Virus Research Institute
Barbara Mukasa, MBChB, MPH	Executive Director, Mildmay Uganda
Fredrick Makumbi, PhD	Senior Lecturer and Departmental Chair, Epidemiology and Biostatistics, College of Health Sciences, Makerere University
James Mugisha, PhD	Senior Lecturer, Mental Health Systems Research & Development Specialist, Kyambogo University & Butabika National Referral and Teaching Hospital
Victor Musiime, MBChB, MMed, PhD	Senior Lecturer, Department of Paediatrics and Child Health, College of Health Sciences Makerere University
Janet Nakigudde, PhD	Clinical Psychologist and Lecturer, Psychiatry, College of Health Sciences, Makerere University

CHILD-GRF is supported by the Eunice Kennedy Shriver National Institute of Child Health & Human Development (NICHD) and Fogarty International Center (FIC) (D43TW011541). The program provides state-of-the-art methods training, mentoring, and hands-on research experience to promising early career researchers from Ugandan institutions committed to research that addresses HIV prevention and the serious burden of child and adolescent mental health in the context of HIV/AIDS. The training program's aim is to increase, strengthen, and sustain the capacity of research institutions in Uganda, a country heavily affected by HIV/AIDS.

"Great program! Wonderful learning experience, great mentorship from the program directors. The program was well-organized with good communication and feedback."

– CHILD-GRF Fellow

Program Highlights



Pilot Awards

In 2021, Cohort One (fellows in their second year of training) focused on designing, drafting, presenting, and beginning their pilot study to generate compelling preliminary data that substantiates proposals for larger, extramurally funded research. During the final week of the summer training session, Cohort One fellows submitted a six-page proposal highlighting their specific aims, research strategy, data analysis plans and Protection of Human Subjects plans.

“The peer review session was helpful. Reviewing the proposals as a peer reviewer provided additional learning and new skills.”
– RRT Trainee on Review Committee

Applications were reviewed by review committees consisting of program directors, faculty mentors, and peer reviewers. Each proposal was reviewed in an NIH-style review session, receiving feedback and guidance to the fellows before their final proposals were approved by program leadership and funding was dispersed. The \$5,000 in seed funding is designed to support all research activities, including participant incentives, IRB submission fees, and other field activities. The funding is critical for fellows to establish the groundwork and generate preliminary/pilot data that will inform their extramural grant application submissions.

Fogarty International Center D43 Supplemental Grants

The CHILD-GRF program has been awarded two supplemental grants to address specific, emerging areas that are aligned with the scope of the original program grant:

- **Examining the Effects of COVID-19 Restrictions on Ugandan Youth Living with HIV:** Postdoctoral fellow William Byansi, a Ugandan national with ties to both Makerere University and Washington University in St. Louis, received a one-year supplemental grant from NIH’s Fogarty International Center. For this supplement, Dr. Byansi will work with his mentors, Dr. Noeline Nakasujja at Makerere University and Dr. Fred Ssewamala at Washington University in St. Louis, to leverage the CHILD-GRF training program and ICHAD’s Suubi+Adherence study to examine the impact of the epidemic response and social distancing measures on adolescents’ mental health, including COVID-19-related depressive symptoms, anxiety, and stress. The research team is set to conduct interviews with 500 youth living with HIV (YLHIV) across 39 health facilities accredited to provide antiretroviral therapy (ART). The study also examines the multi-level COVID-related facilitators and barriers to ART access and uptake among YLHIV. Findings may inform the development of interventions to address mental health challenges associated with future epidemics for YLHIV in low-resource settings.
- **Assessing the Implementation of the Makerere University’s Policy and Regulations Against Sexual Misconduct and Harassment (PRASH):** Led by multiple principal investigators Proscovia Nabunya, Rachel Brathwaite, and Noeline Nakasujja, PRASH builds on the work of Makerere University’s Investigative Committee on Sexual Misconduct and Harassment, to assess the implementation of the current policy and regulations against sexual

harassment as well as the Committee's policy recommendations, and to develop a policy evaluation and monitoring framework to guide ongoing and future policy implementation.

Fogarty International Center Networking Meeting Presentations

In October, two CHILD-GRF fellows were invited to present at the Fogarty International Center's Annual HIV Research Training D43 Trainees and K Grantees Network Meeting. CHILD-GRF fellows from the first cohort, Dr. Anita Arinda and Dr. Violette Nabatte, gave presentations at this virtual meeting, highlighting their progress, challenges navigated, next steps, and long-term goals for their mentored research projects. The meeting provided a valuable opportunity for fellows from all FIC-funded D43 training programs globally to share their work and identify opportunities for future collaborations.

The CHILD-GRF program has many positives, including having the opportunity to interact with experienced researchers and other health professionals at the NIH, WashU, and other global leaders; the wealth of evidence-based materials available to us; and the peer-led sessions were very mind opening."

— CHILD-GRF Fellow

Publications

For an up-to-date list of CHILD-GRF trainee publications, visit <https://sites.wustl.edu/childgrf/publications/>.

CHILD-GRF Trainees

The first two CHILD-GRF cohorts consist of 12 highly qualified fellows with an interest in combination HIV prevention addressing persistent poverty, co-occurring child and adolescent mental health problems, and HIV care and prevention in HIV-impacted communities.

The following fellow profiles provide a detailed description of each CHILD-GRF fellow's accomplishments.

COHORT 1 (June 1, 2020 – Present)



Rachael Alinaitwe, MBChB, MMed
Psychiatrist, College of Health Sciences,
Makerere University

Mentor
Dickens H. Akena, PhD

Biography

Dr. Rachael Alinaitwe is a qualified medical doctor with a specialization in Psychiatry. She is passionate about mental health for children and adolescents. Dr. Alinaitwe is currently working on a project titled "Detection of Depression Among HIV Positive Adolescents in Care in Uganda" which aims to determine the magnitude of depression and associated factors among HIV positive adolescents in Uganda. Dr. Alinaitwe is creating the study protocol and developing her skills in research methods, grant development, and manuscript writing.

Research Project

**Detection and Referral of Depression
among Adolescents Living with HIV in
Uganda**

Accomplishments

- Publications: Two manuscripts published.
- Completed two Fogarty International Center (FIC) research training and networking workshops.



Anita Arinda, MBChB, MMed
Psychiatrist, Mildmay Uganda Hospital

Mentor
James Mugisha, PhD

Biography

Dr. Anita Arinda is a trained psychiatrist who studied at Makerere University in Kampala, Uganda. She is passionate about child and adolescent mental health research in low-resource settings. Specifically, she is interested in neurodevelopmental disorders especially Autism Spectrum Disorder (ASD). Throughout her research career, she hopes to build on the existing yet limited knowledge of neurodevelopmental disorders in low-income settings as well as develop cost-effective and feasible intervention programs for children with these disorders and their families.

Accomplishments

- Publication: One manuscript published.
- Presented at FIC HIV Research Training D43 Trainees and K Grantees Network Meeting (October 4-5, 2021), “An HIV Education Program for Improvement in HIV Knowledge for Adolescents with Intellectual Disability in Entebbe, Uganda”.
- Research Fellow with Global Initiative for Neuropsychiatric Genetics Education in Research (GINGER): A neuropsychiatric genetics training program under Harvard T.H. Chan School of Public Health and Broad Institute of MIT.
- Conducted a qualitative study nested in a study on “Neuroinflammation and Modulating Factors in Depression and HIV”.
- Coordinated the D43 supplement on sexual harassment, “Assessing the Implementation of the Policy and Regulations against Sexual Harassment (APRASH) at Makerere University” (D43TW011541-01).

Research Project

An HIV Education Program for Improvement in HIV Knowledge for Adolescents with Intellectual Disability in Entebbe, Uganda



Agatha Kafuko, MA
PhD Student, Makerere University

Mentor
Paul Bukuluki, PhD

Biography

Dr. Agatha Kafuko’s research seeks to identify and examine the nature and prevalence of mental health problems among older children and adolescents in post conflict and resource-constrained communities, with perinatal HIV exposure, including those who are HIV-infected and those who were perinatally exposed to HIV but remain uninfected. Using mixed methods, the study seeks to compare the impact of HIV infection on the two categories of HIV affected children and adolescents and to delineate social and environmental risk factors associated with mental health functioning among these children. This research is intended to generate evidence that can contribute to informing the development of appropriate intervention strategies for improving mental health functioning among HIV affected children in low resource and post conflict settings of Uganda.

Research Project

Youth Participatory Action Research to Co-Create and Implement a Social Support Intervention to Improve Psychosocial Functioning and ART Adherence among Adolescents in Central Uganda

Accomplishments

- Publications: Six manuscripts in-progress.
- Completed a series of training workshops with the Evaluation Fund.
- Completed Edge for Scholars Online Grant Writing Workshop.

- Presented “Association of Sexual Violence on Mental Health Outcomes among 13-17 year-old Girls in Uganda: A Nationally Representative Survey in Uganda” at the Training of Policy Makers on the use of the national violence against children survey data, hosted by the AfriChild Centre.
- Fellow, Together for Girls Research Fellowship, extended from May 2021 to December 2021 due to COVID-19 lockdowns.



Apollo Kivumbi, MBChB, MPH
Master of Medicine in Psychiatry
Student, College of Health Sciences,
Makerere University

Mentor
Fredrick Makumbi, PhD

Research Project
Cognitive Deficits in Children and Adolescents
with HIV/AIDS and ADHD Co-Morbidity

Biography

Dr. Apollo Kivumbi is currently a Master of Medicine in (MMed) Psychiatry student at the College of Health Sciences, Makerere University. Dr. Apollo has a strong interest in child and adolescent mental health. Specifically, his research interests lie in optimizing functioning among children and adolescents diagnosed with neurodevelopmental disorders, which disproportionately affect HIV infected individuals. He also studies the use of technology to improve mental health outcomes among children and adolescents and their families after a diagnosis of a mental illness.

Accomplishments

- Publications: Six manuscripts published.
- Implemented a digital campaign focused on creating awareness of digital mental health under the Ethics for Mental Health Digital Innovation for Young People in Africa network.



Violette Nabatte, MBChB, MMed
Head of Pediatric and Adolescent
Services, Mildmay Uganda Hospital

Mentor
Barbara Mukasa, MBChB, MPH

Research Project
Prevalence and Factors Associated with
Depression among Adolescents Living with HIV
in Care at Mildmay Uganda Hospital

Biography

Dr. Violette Nabatte is the current head of Pediatric and Adolescent Services at Mildmay Uganda Hospital in Kampala, Uganda. Dr. Nabatte holds a Master of Medicine in Pediatrics and Child Health from Makerere University. Her research interests include academic performance of adolescents living with HIV and caregiver perceptions of adolescent academic performance.

Accomplishments

- Earned a certificate in Good Clinical Practice (GCP) by NIDA Clinical Trials Network.
- Presented “Characteristics of vulnerable pregnant adolescents enrolled in PND-Suubi in Wakiso District” at the 5th Annual Conference on Child Behavioral Health in Sub-Saharan Africa organized by SMART Africa Center.
- Presented findings from “Characteristics of vulnerable pregnant adolescents enrolled in PND-Suubi in Wakiso District” at the Trainee Network meeting by Fogarty International Center.



Justine Diana Namuli, MBChB, MMed
Psychiatrist, Lecturer, Makerere University

Mentor

Janet Nakigudde, PhD

Biography

Justine Diana Namuli is a child and adolescent psychiatrist who is currently a lecturer at the Department of Psychiatry, College of Health Sciences, Makerere University. She is also at the College of Health Sciences, Makerere University. She is interested in HIV/AIDS stigma research, more specifically, if stigma is associated with sociodemographic factors and clinical retention characteristics in children affected by HIV/AIDS in Uganda.

Research Project

The Burden, Types, Lived Experiences of HIV Stigma and Associated Factors among HIV Infected Children and Adolescents: A Mixed Methods Study in Uganda

Accomplishments

- Publications: Six manuscripts published.
- Presented “Effects of COVID -19 on Children During Lockdown” in a workshop organized by Makerere University Medical Student’s Association.
- Completed a counselling training with THE SEEK—Group Supported Psychotherapy, which covered various topics related to supporting Ugandans during the COVID-19 pandemic.
- Contributed to the scoring and validation of the Uganda minimum health care package and a set of interventions that have been included in the package as a key stakeholder.
- Presented at the 2021 leadership conference at Centro internazionale do quartiere, organized by Phenomenal Women Global, Milan, Italy.



Esther Nanfuka, MA, PhD
Assistant Lecturer, Department of Social Work and Social Administration, Makerere University

Mentor

David Kaawa-Mafigiri, PhD

Research Project

Mental Resilience in the Face of Anxiety, Depression and Suicidal Ideation: A Qualitative Study of Adolescents Living with HIV in Uganda

Biography

Dr. Esther Nanfuka is a trained social worker who has 10 years of experience as an Assistant Lecturer in the Department of Social Work and Social Administration at Makerere University. She recently completed her PhD in Social Work and successfully defended her dissertation that examined how people living with HIV in Uganda mobilize resources for the day-to-day management of HIV/AIDS under conditions of precariousness. Her dissertation focused on risk and resilience. Her research interests include child protection, resilience among people living with HIV and other chronic illnesses, and gender-based violence.

Accomplishments

- Publications: Two manuscripts published; two in-progress.
- Funding: Awarded “Resilience During and After Quarantine: A Study of People Affected by COVID-19 in Uganda” funding from the Makerere University Research Innovation Fund 2 (Mak RIF). Two grants in development.

COHORT 2 (June 1, 2021 – Present)



Harriet Ajilong, MBChB
Pediatrician/Lecturer, Gulu University

Mentor
Victor Musiime, MBChB, MMED, PhD

Biography

Dr. Harriet Ajilong is a pediatrician with over seven years of clinical practice, medical education and public health having obtained her masters in Pediatrics and Child Health from Makerere University. While working with Makerere University-John Hopkins Research collaboration, Dr. Ajilong coordinated the HPTN046 phase III trial aimed at determining the safety and efficacy of Nevirapine in the prevention of vertical transmission of HIV during breastfeeding. She has broad experience in designing, implementing, monitoring and evaluation of maternal and newborn health programs having worked with the USAID funded Regional Health Integration to Enhance Services in 11 districts of East Central Uganda. She is also a regional trainer of a number of in-service training curricula for health workers and an active member of the Uganda Pediatric Association and the National Newborn Steering Committee. She currently works as a lecturer in the Department of Pediatrics and Child Health at Gulu University where she teaches and mentors emerging young medical professionals.

Accomplishments

- Presented “Strengthening Hypoxemia Management among Neonates and Children Admitted in a Tertiary Hospital during the Covid-19 Pandemic,” at a virtual conference organized by Uganda Pediatric Association (UPA).



Raymond Atwebembere, MBChB
Intern Medical Doctor, St. Joseph’s Hospital, Kitovu

Mentor
Dr. James Mugisha, PhD

Biography

Dr. Raymond Atwebembere is an intern medical doctor at St. Joseph’s Hospital in Kitovu, Uganda, as well as a study coordinator for the Suubi4Stigma and Suubi+Adherence R2 Studies with ICHAD. His research attempts to ascertain the relationship between depression and suicidality. He aims to study both dependent and independent variables that contribute to depression and how each of these associate depression with suicidality.

Accomplishments

- Completed FIC HIV Research Training, Implementation Science Journal Club Seminar: Qualitative methods in Implementation Science, Makerere University and National Institute of Health.
- Participated in the Virtue Buddy Doctor Initiative by NOVO NORDISK.

Research Project

Association Between Vitamin D Levels and Depression among HIV-Positive Adolescents in Post-Conflict Northern Uganda

Research Project

Association between Depression and Suicidality amongst Children Living with HIV in Low Social Economic Settings



Yvonne Karamagi, MBChB, MPH
 Director Medical Services - Mildmay
 Uganda Hospital

Mentor
 Akena Dickens, MBChB, MMed Psych,
 PhD

Research Project

**To Assess the Impact of COVID-19 on the
 Mental Health of Adolescents Living with
 HIV (ALHIV) Aged 15-19 Years at Mildmay
 Uganda**

Biography

Dr. Yvonne Karamagi is a medical doctor with a Master's in Public Health. She is emerging in pediatric and adolescent HIV research having active participation in ongoing studies for Prevention of Mother-To-Child HIV Transmission (PMTCT) and for Pharmacovigilance of dolutegravir-based antiretroviral therapies (ART). She is interested in researching the effect of COVID-19 on the mental health of adolescents living with HIV in Uganda. Her current role as Director of Medical Services includes scaling up of comprehensive pediatric and adolescent HIV services including prevention, care, treatment and research services to special populations like orphans and vulnerable children. Her Child and Adolescent Mental Health (CAMH) research shall support introducing relevant screening tools into service delivery. The skills gained from the CHILD-GRF shall equip her in leading mental health research teams to tackle issues during COVID-19 responses in the context of HIV in Uganda.

Accomplishments

- Co-Investigator, National Drug Authority (NDA) (Ndagije/Mukasa, PI).
- Trial Site-clinical program oversight lead at Mildmay Uganda Hospital, (Mukonzo, PI).
- Research fellow, supplement grant (Byansi; Nakasujja, PIs).
- Clinical oversight for the Mildmay Uganda laboratory, responsible for the study lab tests analyses at Mildmay Uganda, Suubi +Adherence R2 study.



Richard Mpango, BSc, MSc, PhD
 Research Scientist, MRC/UVRI and LSHTM
 Uganda Research

Mentor
 Eugene Kinyanda, PhD

Biography

Dr. Richard Stephen Mpango acquired a PhD (Psychiatric Epidemiology) from Mbarara University of Science and Technology (MUST) in 2018. Dr. Mpango has an Master of Science in Clinical Psychology from Makerere University and Bachelor's (Honors Degree) in Guidance/Counseling from Kyambogo University. He has earned a Diploma in Occupational Therapy and an Advanced Diploma in Child Psychiatry (Child and Adolescent Mental Health Specialist), and he is a specialized addiction professional/trainer, and international trainer of trainers on the Universal Treatment Curriculum (UTC) for Substance Use Disorders (Colombo Plan Drug Advisory Program). Since 2014, Dr. Mpango has worked as a Project Leader at Medical Research Council (MRC)/Uganda Virus Research Institute (UVRI) and London School of Hygiene and Tropical Medicine (LSHTM) Uganda Research Unit, Entebbe. He is a Senior Lecturer at School of Health Sciences, Soroti University. Dr. Mpango's publications, career and research interests focus upon Behavioral and Neurodevelopmental disorders among Children and Adolescents with HIV (CA-HIV).

Research Project

**Evaluating the Effectiveness of the New
 Forest Parenting Program (NFPP) to Mitigate
 Behavioral Problems and Improve
 Adherence Outcomes among Children and
 Adolescents Infected with HIV (CA-HIV) in
 Uganda**

Accomplishments

- Publications: Two manuscripts published; two under review.
- Initiated collaborations with preeminent researchers in the areas of parenting, HIV/AIDS, and behavioral health working in Denmark, Kenya, UK, US, and Uganda.



**Andrew Sentoogo Ssemata, BCP,
MSc**

**Doctoral Student, Makerere
University**

Mentor

Eugene Kinyanda, PhD

Research Project

**Transitioning from Pediatric to Adult HIV Care
Services and its Impact on Adherence and
Mental Health and Wellbeing for Adolescents
and Young People at an HIV Clinic in Kampala**

Biography

Andrew Sentoogo Ssemata is currently a PhD scholar at the Department of Psychiatry, College of Health Sciences at Makerere University in Kampala, Uganda. He holds a Master of Science in Health Psychology from Aston University, Birmingham, UK. He has a great passion for child and adolescent mental health research in low resource settings. His research interest is the transition from pediatric to adult HIV care services and its impact on adherence, immediate and long-term mental health and wellbeing for adolescents in Uganda.

Accomplishments

- Publications: Five manuscripts published.
- Completed the certificate course Theories of Behavior Change, with Makerere University College of Health Sciences Behavioural Social Science Research Project.



CHILD-GRF Trainees meet at Makerere University for an Individual Development Plan training

Researcher Resilience Training (RRT) Program




Program Co-Directors/Mentors


Sean Joe, PhD	Benjamin E. Youngdahl Professor of Social Development, Director, Race and Opportunity Lab, Washington University in St. Louis
Mary McKay, PhD	Vice Provost for Interdisciplinary Initiatives, Washington University in St. Louis
Fred Ssewamala, PhD	William E. Gordon Distinguished Professor, Associate Dean for Transdisciplinary Faculty Research, Director and Founder, ICHAD, Director, SMART Africa Center, Brown School, Washington University in St. Louis

Funded by the National Institute of Mental Health, the Researcher Resilience Training (RRT) Program (R25MH118935) is designed to provide advanced doctoral students and early career investigators primarily of African descent interested in child and adolescent behavioral health with the necessary research skills to address the significant challenges that exist within resource-constrained settings. These include obstacles related to: 1) Retention of poverty-impacted, highly mobile youth and families, 2) Collaboration with youth, families and providers experiencing high levels of stress and nested within overburdened communities and systems, and 3) Building and maintaining community, provider, and academic partnerships.

Program Highlights



84
Publications by RRT Fellows and Alumni



32
Conference presentations by RRT Fellows and Alumni

RRT Presentation to NIMH on Global Mental Health Day

In honor of Global Mental Health Day, RRT directors and alumni were invited to share the successes of the RRT Program to support child and adolescent mental health researchers of African descent with program officials at the National Institute of Mental Health (NIMH). RRT alumni Dr. Proscovia Nabunya and Dr. Leslie Adams presented their career progress and achievements as a result of their participation in the program to a highly engaged audience





Building Resilience in Research: Experiences from a NIMH-funded training program

October 21, 2021
Mary M. McKay
Fred Ssewamala
Sean Joe
Leslie Adams
Proscovia Nabunya

of NIMH program officers and staff, emphasizing the need for ongoing support for mental health researchers from underrepresented minority groups.

Research Support Funding

Two RRT alumni submitted successful proposals for \$2,000 research support provided by the RRT program. Dr. Leslie Adams' submitted the proposal "*Effectiveness of Mobile Health-Based Tools to Detect Suicide Risk among Black Young Adult Men*" and Dr. Husain Lateef submitted the proposal project "*Face Validity of a Novel Pride and Cultural Heritage Scale for Black Youth: A Delphi Method Study*". Their proposals were peer reviewed through an NIH-style review process during the summer training period. The research funds support the initial development of these projects with the expectation that they will be developed into extramurally funded research studies.

"This was a really productive process. As someone who has not participated in a grant review, this process was very informative on guidelines as a reviewer and also as a potential applicant."

– RRT Trainee on Review Committee

Publications

For an up-to-date list of RRT trainee publications, visit <https://sites.wustl.edu/rtraining/publications/>.

RRT Fellows

The following profiles provide a detailed description of the 2021 RRT fellows' accomplishments.



Patricia Bamwine, PhD, MSW, MA
Assistant Professor, Social Work,
University of Tennessee-Knoxville

Mentor

Sean Joe, PhD, MSW

Biography

Dr. Patricia Bamwine is currently an Assistant Professor at the University of Tennessee-Knoxville. She received extensive training in community-based participatory research (CBPR) with adolescents through the T32 postdoctoral fellowship at the University of Pittsburgh School of Medicine Division of Adolescent and Young Adult Medicine. Dr. Bamwine received both her PhD and Master's degrees in Social Work from the University of Pittsburgh. Prior to moving to Pittsburgh, she completed her Bachelor's degree in Political Science at Campbellsville University and MA in Sociology from Western Kentucky University. Her work is interdisciplinary in that it draws from public health, sociology, thanatology, and social welfare. She utilizes a critical and constructionist perspective to design mixed-methods projects that examine the intersection of gender, race, and class as they relate to social problems such as violence. She is currently focused on interventions that support young people after the loss of a loved one to homicide. Her hope is that this work will aid in the development and improvement of service design and delivery to reduce negative life outcomes for young people of color.

Research Project

Multi-level Interventions: Trauma & Safety

Accomplishments

- Publications: Four manuscripts under review; five in-progress.
- Abstract accepted for the 2022 Society for Social Work and Research Conference, "Violence Exposure, Depression, and Sleep: A Study of Black and Latinx Adolescents in the U.S."



Jasmin Brooks, MA
PhD Student, University of Houston

Mentor
Sean Joe, PhD, MSW

Research Project
Why do Black People Die by Suicide?

Biography

Jasmin Brooks is a doctoral candidate in Clinical Psychology at the University of Houston. Jasmin utilizes mixed methods approaches to examine how race-related stressors, including racial discrimination and microaggressions, influence suicide vulnerability and internalizing mental health disorders within Black populations. Jasmin's current program of research focuses on identifying culturally relevant protective factors that moderate the association between racism-related stress and mental health outcomes for Black youth and emerging adults. She aims to apply her findings to the development of clinical interventions that reduce racial stress and promote psychological well-being within Black communities.

Accomplishments

- Publications: Three manuscripts published.
- Recipient of the National Academies of Science, Engineering, Medicine Ford Foundation Predoctoral Fellowship.



Joshua Kiyingi, MSTAT
PhD Student/ Research Associate, Washington University in St. Louis

Mentor
Fred Ssewamala, PhD, MSW

Research Project
Prevalence and Predictors of HIV and Sexually Transmitted Infections among Vulnerable Women Engaged In Sex Work: Findings from the Kyaterekera Project in Southern Uganda

Biography

Joshua Kiyingi is a first year Public Health Sciences doctoral student at the Brown School, Washington University in St. Louis. Born and raised in Uganda, he received his BS in Quantitative Economics (2011) and MS in Statistics (2018) from Makerere University, Kampala, Uganda. After completing his BS, he worked as a research assistant on the commission of inquiry into mismanagement of universal primary education (UPE) and universal secondary education (USE) under the Ministry of Justice and Constitution Affairs of the Republic of Uganda. He worked as a monitoring and evaluation officer on a USAID funded sustainable outcome for children and youth (SOCY) program and later coordinated two NIMH funded multisite studies in Uganda: 1) The Kyaterekera Study, which is a combination intervention addressing sexual risk-taking behaviors among vulnerable women in Uganda and 2) SMART Africa – Uganda, aimed at reducing gaps in child and adolescent mental health services and research in SSA through a population approach to child mental health with ICHAD. His research interests include global health and maternal and child health.

Accomplishments

- Publications: Three manuscripts published; seven in-progress.
- Serves as a Brown School Graduate Council representative (2021-22).
- Awarded an extension to the Together for Girls research fellowship from May 2021 to December 2021.
- Submitted two abstracts for the Society for Prevention Research (SPR) 2022 Annual Meeting:
 - "Prevalence and Predictors of HIV and Sexually Transmitted Infections among Vulnerable Women Engaged In Sex Work: Findings from the Kyaterekera Project in Southern Uganda"
 - "Engaging Vulnerable Women Engaged in Commercial Sex in the Implementation of an HIV Risk Reduction Intervention in Southern Uganda".



Samuel Kizito, MD, MSc
PhD Student/Research Associate,
Washington University in St. Louis

Mentor
Fred Ssewamala, PhD, MSW

Biography

Dr. Samuel Kizito has over seven years of research experience in low-income settings while coordinating HIV/TB studies at Makerere University in Uganda. He is a PhD student at the Brown School at Washington University in St. Louis. He is also a research associate at the International Center for Child Health and Development (ICHAD) at Washington University in St. Louis, supporting the NIH-funded Suubi+Adherence study. In 2019, he moved to the US and served as a research associate at the Boston University School of Public Health. His research focuses on designing, implementing, and evaluating interventions to improve care for patients with HIV and its complications. He earned his Medical Degree and MSc in Clinical Epidemiology and Biostatistics from Makerere University. He also completed a one-year NIH/Fogarty-funded Global Health fellowship through Yale University and the University of California Berkeley. He has widely published his work in peer-reviewed journals like BMJ, PLoS one, and BMC series.

Research Project

Evaluating the Impact of a Family-Based Economic Intervention on ART Adherence among Adolescents Living with HIV in Uganda

Accomplishments

- Publications: Three manuscripts published; one under review; and six in-progress.
- Recipient of the McDonnell International Scholars Academy fellowship.
- Served as a reviewer for the BMC Pediatrics journal and the Global Social Welfare journal.



Jennifer Nattabi, MSW
PhD Student/Research Associate,
Washington University in St. Louis

Mentor
Fred Ssewamala, PhD, MSW

Research Project

The Impact of Parent-Adolescent Communication on Reduction of Sexual Risk Possibility among Adolescents: Findings from the Suubi-Maka Study

Biography

Jennifer Nattabi is a first year doctoral student at the Brown School at Washington University in St. Louis. Ms. Nattabi's research and career interest relates with identifying the multi-level factors that facilitate and/or hinder social upward mobility of adolescent girls. She is specifically interested in looking at how education can accelerate upward mobility of adolescent girls as they transition from secondary schools to higher levels of learning. She is a research associate at the International Center for Child Health and Development.

Accomplishments

- Publications: One manuscript published; one under review, and four in-progress.
- Abstract accepted for the 2022 Society for Social Work and Research Conference, "The Association of Education Level and Justification of Intimate Partner Violence (IPV) Among Women in Uganda".
- Recipient of the McDonnell International Scholars Academy fellowship.



Ijeoma Opara, PhD, LMSW, MPH
Assistant Professor, Yale School of Public Health

Mentor
Mary McKay, PhD

Biography

Dr. Ijeoma Opara is a tenure-track Assistant Professor of Racism & Health in the Department of Social & Behavioral Sciences at Yale School of Public Health. Dr. Opara is also the founding director of The Substance Abuse and Sexual Health (SASH) Lab (www.oparalab.org). She defines herself as a community-based participatory researcher with experience in working with youth and community organizations dedicated to reducing substance use in urban communities. Dr. Opara's prior experience involves working as a doctoral fellow for a SAMHSA/Drug Free Communities grant that was based in Paterson, New Jersey. Dr. Opara has received training and funding to conduct her work from the National Institute on Drug Abuse, National Institute of Mental Health, Substance Abuse & Mental Health Services Administration and Centers for Disease Control & Prevention. Dr. Opara received the 2020 NIH Director's Early Independence Award which funds a five-year youth substance use prevention and mental health community-based study in Paterson, NJ. She received her PhD in Family Science & Human Development from Montclair State University, a MSW from New York University, an MPH from New York Medical College and a BA in Psychology from New Jersey City University.

Research Project

Understanding the Role of Neighborhoods on Substance Use and Mental Health among Urban Youth of Color in Paterson, NJ

Accomplishments

- Publications: Eighteen manuscripts published; two under review.
- Presented poster, "The Effects of Neighborhood Resources and Disparity on Public School Absenteeism in Passaic County, New Jersey," Society for Prevention Research Annual Conference (virtual).
- Presented "Reframing Sexual Behavior and Sexual Health for Black Girls and Women. HIV & Sexual Health SIG Prioritizing Black Women's Health: Examining the Roles of Substance Use, PrEP Awareness and Strengths-Based Approaches," Symposium at the 42nd Society for Behavioral Medicine 2021 Conference (virtual).
- Keynote Speaker, "#BlackGirlMagic. Using strengths in prevention research for Black girls," STEMNoire Conference, June 2021.
- Presented "Strengths-Based Strategies to Address Gendered Racism and Substance Use and Mental Health in Urban Youth," NIDA Intramural Seminar Series.
- Recipient, NIH Loan Repayment Program (NIDA-Health Disparities Research): \$100,000.

"I absolutely loved the program! It built my confidence as a researcher. It also provided me with space to build resilience with other diverse researchers. I was developed, challenged, mentored, and embraced as a scientist. The sessions were well planned and prepared. The content was amazing. The team at Washington University was empowering."

– RRT Fellow



Richardson, Sonya, PhD, MSW
Assistant Professor, University of
North Carolina

Mentor
Sean Joe, PhD

Biography

Dr. Sonya Richardson is an Assistant Professor in the School of Social Work at the University of North Carolina at Charlotte. She possesses a Ph.D. in Curriculum and Instruction (University of North Carolina Charlotte), MSW (University of North Carolina Chapel Hill), and a BA in Psychology (University of North Carolina Charlotte). Her research focuses on Black mental health, suicide, and urban education. Dr. Richardson was appointed by Governor Roy Cooper to serve on the Andrea Harris Social, Economic, Environmental, and Health Equity Force. Additionally, Dr. Richardson is the founding owner of Another Level Counseling and Consultation located in Charlotte, North Carolina which she has owned and operated for over 14 years.

Accomplishments

- Publication: One manuscript published.
- Funding:
 - UNC Charlotte Faculty Research Grant. (\$8,000). Role: Principal Investigator
 - Advancing Equitable Mental Health Outcomes for Racially/Ethnically Diverse Populations. NC Charlotte Chancellor's Diversity Fund (\$4,060). Role: Principal Investigator.
 - Culturally Adapted Linking Individuals Needing Care Model. Submission. Role: Principal Investigator.
- Presented "Suicide and Racially/Ethnically Diverse Populations: Amplifying Our Stories," at the Summit on Mental Health with the Association of Health Care Journalists.
- Keynote presenter, "Cultural Differences in Suicide Prevention, Assessment, and Response," at the National Association of Social Workers New Hampshire.
- Presented "Does Race Trump Training? Comparing Teacher Training, Teacher Race and their Effect on the Educational Attainment for Black Students," at the American Educational Research Association (AERA).
- Presented "Pretty Hurts: Understanding and Preventing Suicidal Behavior among Black Girls," at the Black Mental Health Symposium.
- Presentation poster, "Testing the Suicide Minority Paradox: The Role of Race/Ethnicity with Suicide-Related Behaviors," at the Society for Social Work Research Annual Conference.
- Completed Practical Guidance for Embodying Equity in Implementation.
- Completed the C-SSRS Training. Research Foundation for Mental Hygiene.

Research Projects

Managing Human Capital to Achieve the Optimal Behavioral Health Outcomes using a Data-Driven Capacity to Serve Conceptual Framework

LEAD Global Training Program



Program Co-Directors

Patricia Cavazos, PhD	Professor, Vice Chair for Diversity, Equity and Inclusion in the Department of Psychiatry, Director, Mentored Training Program in Clinical Investigation, Washington University in St. Louis
Fred Ssewamala, PhD	William E. Gordon Distinguished Professor, Associate Dean for Transdisciplinary Faculty Research, Director and Founder, ICHAD, Director, SMART Africa Center, Brown School, Washington University in St. Louis

Mentors

Abdallah Ibrahim, DrPH, CPH	Senior Lecturer at the School of Public Health, University of Ghana
Arvin Bhana, PhD	Honorary Associate Professor of Psychology, University of KwaZulu-Natal, Durban, South Africa
Theresa Betancourt, PhD	Professor, Social Work, Global Practice, Boston College
Patricia Cavazos, PhD	Professor, Vice Chair for Diversity, Equity and Inclusion in the Department of Psychiatry, Director, Mentored Training Program in Clinical Investigation, Washington University in St. Louis
Juliet Iwelunmor, PhD	Associate Professor, Behavioral Science and Health Education, College for Public Health and Social Justice, St. Louis University
Shannon Lenze, PhD	Professor of Psychiatry, School of Medicine, Washington University in St. Louis
Mary McKay, PhD	Vice Provost for Interdisciplinary Initiatives, Washington University in St. Louis
Janet Nakigudde, PhD	Behavioral Scientist and Lecturer, Psychiatry, College of Health Sciences, Makerere University
Proscovia Nabunya, PhD	Research Assistant Professor, Social Work, Washington University in St. Louis
Robert Paul, PhD	Professor, Behavioral Neuroscience, University of Missouri, St. Louis, Director, Missouri Institute of Mental Health
Ilana Seff, PhD	Research Assistant Professor, Public Health, Washington University in St. Louis
Ozge Sensoy Bahar, PhD	Co-Investigator – LEAD and CHILD-GRF, Research Assistant Professor, Social Work, Washington University in St. Louis, Co-Director of ICHAD
Fred Ssewamala, PhD	William E. Gordon Distinguished Professor, Associate Dean for Transdisciplinary Faculty Research, Director and Founder, ICHAD, Director, SMART Africa Center, Brown School, Washington University in St. Louis
Lindsay Stark, PhD	Associate Professor, Associate Dean for Global Strategy and Programs, Washington University in St. Louis

LEAD is supported by the Institute of Minority Health and Health Disparities (T37MD014218) and is designed for predoctoral students and postdoctoral trainees from underrepresented backgrounds in the United States committed to conducting health disparities research with a specific focus on global mental health prevention, intervention, services, and implementation research within resource-constrained settings. This program equips trainees with foundational global research skills and knowledge through experiential learning, mentoring, hands-on immersion in domestic and international mental health studies, individualized consultation, goal setting and monitoring, and ongoing support across time. LEAD features a short-term summer intensive option as well as up to two twelve-month postdoctoral fellowships with the potential for a second twelve-month appointment.

“I found the LEAD summer program to be quite rewarding. I not only had the opportunity to broaden my network, but I’ve resumed work in a topic area that has always been important to me.”
— LEAD Trainee

In 2021, the second cohort of LEAD trainees was comprised of seven summer program trainees and two one-year postdoctoral research associates. LEAD trainees are highly qualified predoctoral and postdoctoral early career researchers from underrepresented minority groups with an interest in global mental health disparities in resource-constrained settings. From institutions across the United States, they worked with their mentors on research projects focused on communities in the United States and Sub-Saharan Africa, as well as in Central and Southeast Asia. Trainees and alumni continue to collaborate on projects initiated with their mentors beyond their training appointments.

Program Highlights



30

Publications by LEAD trainees and Alumni



LEAD new logo



20

Conference and academic presentations by LEAD trainees and Alumni

To incorporate LEAD’s global reach and in response to community feedback, the LEAD logo was updated. The new logo reflects the program’s global focus areas and our diverse cohorts of trainees.

Publications

For an up-to-date list of LEAD trainee publication, visit <https://sites.wustl.edu/lead/publications/>.

Summer 2021 Trainees



Charisse Ahmed, BS, SBN
Doctoral Student, Nursing
University of Pennsylvania

Mentor
Arvin Bhana, PhD

Biography

Charisse Ahmed is a third-year doctoral student at the University of Pennsylvania School of Nursing. Her dissertation topic is formative research to inform the development of an intervention to improve treatment adherence among adolescents living with HIV in Eswatini. Charisse is currently a two-year nurse fellow at the Children’s Hospital of

Research Projects

VUKA Family Program: Supporting Perinatally HIV-Infected Youth in South Africa RCT Data Analysis and BeFITS tool validation

Philadelphia's (CHOP) Leadership Education in Adolescent Health (LEAH) Fellowship Program, and an adolescent psychiatric/behavioral health nurse at Belmont Behavioral Health System in Philadelphia. Charisse graduated summa cum laude in 2015 from the University of Florida with a major in health education and minors in health disparities and African studies. Charisse later pursued a second bachelor's degree in nursing at the University of Pennsylvania and graduated summa cum laude in 2018. Before starting her nursing education, Charisse explored adolescent service delivery practices among lay health workers as a Fulbright research grantee in Eswatini. Charisse would like to use her research skills and background in implementation science to improve mental health outcomes and quality of care among disenfranchised and minority youth.

Accomplishments

- Publications: One manuscript published; two under review; two in progress.
- Presentation, Children's Hospital of Philadelphia Global Health Conference, "Making Up for Lost Time".
- Certificate completed: Introduction to Creation and Use of GIS Maps: Applications for Social Services.
- Recipient: Children's Hospital of Philadelphia Leadership and Education in Adolescent Health Fellowship.



Philip Baiden, PhD
Assistant Professor, Social Work,
University of Texas-Arlington

Mentor
Patricia Cavazos-Rehg, PhD

Biography

Dr. Philip Baiden is an Assistant Professor at the University of Texas at Arlington School of Social Work. He obtained his PhD from the Factor-Inwentash Faculty of Social Work at the University of Toronto, Canada. Dr. Baiden's research focuses on adverse childhood experiences (ACEs), suicidal behaviors, child and adolescent mental health, and social determinants of health. Using socio-ecological theory as a conceptual framework, Dr. Baiden is interested in understanding psychosocial factors that influence suicidal behaviors among adolescents in Sub-Saharan Africa. Dr. Baiden has authored and co-authored several peer-reviewed publications appearing in high-ranking academic journals.

Accomplishments

- Publications: Six manuscripts published.
- Submitted abstracts for the 2022 Biennial Meeting of the Society of Research on Adolescence:
 - "Use of electronic vaping products and mental health among adolescent high school students in the United States: The moderating effect of gender"
 - "Examining the association between sexual violence, bullying victimization, and electronic vaping products use among adolescents in the United States".



Devin Banks, PhD
Assistant Professor, Psychological Sciences,
University of Missouri St. Louis

Mentor
Patricia Cavazos-Rehg, PhD

Biography

Dr. Devin Banks is a psychologist and Assistant Professor at the University of Missouri—St. Louis. She earned her PhD in Clinical Psychology from Indiana University—Purdue University in 2020. Dr. Banks' research focuses on improving racial equity in the research and treatment of substance use and related behavioral health

Research Project
COVID-19 & Opioid Treatment: Impacts on
Vulnerable Populations at the Intersection
of Two Epidemics

outcomes (e.g., sexual behavior, traumatic stress), particularly among Black people. Her work seeks to understand the development of substance use among minoritized communities and prevent related problems that disproportionately affect those communities. Ultimately, her goal is to improve behavioral health equity via culturally-responsive prevention across development.

Accomplishments

- Publications: Two manuscripts published; two in progress.
- Funding received: NIH/ National Center for Advancing Translational Sciences & Washington University Institute of Clinical and Translational Sciences (KL2 TR002346), “Integrating Geospatial and Community Methods to Improve Opioid Treatment Equity,” Role: Subaward PI & KL2 Scholar (\$253,744 direct costs, PI: Fraser)
- Presented poster, “COVID-19-Related Barriers to Recovery among African Americans with Opioid Use Disorder,” College on Problems of Drug Dependence (virtual).



Fithi Embaye, MPH, BS
Doctoral Student, Social Work,
Washington University in St. Louis

Research Project
SMART Africa Uganda

Mentor

Primary Mentor: Ozge Sensoy Bahar, PhD
Secondary Mentor: Janet Nakigudde, PhD

Biography

Fithi Embaye is a social work doctoral student at Washington University in St. Louis. She received her BA in Sociology and Social Work from University of Asmara in 2007, her MA in sociology in 2012 and MSW in 2017 from Ohio University. Fithi is a Licensed Independent Social Worker (LISW) and certified Early Childhood Mental Health Consultant (ECMHC) with clinical training in evidence-based therapy models for children with trauma and mental health challenges. Most recently, her work engaged evidence-based practices and systems level mental health interventions to promote trauma informed care in early education settings. Her research interests are in intergenerational trauma, child wellbeing, and development. She is committed to investigating the behavioral, educational and health outcomes associated with childhood exposure and risk of trauma, particularly abuse and neglect in resource scarce communities. Fithi is also interested in investigating individual and system level socio-cultural factors that promote or challenge the successful adoption of evidence-based practice implementation quality and overall impact on low resource communities.

Accomplishments

- Publication: One manuscript in progress.



Ivan Estrada, MPH
Doctoral Student, Public Health and
Human Sciences, Oregon State University

Research Project
Examining the Perspectives and
Experiences of MFG Facilitators and Head
Teachers

Mentor

Ibrahim Abdallah, PhD

Biography

Ivan Estrada is a doctoral student at Oregon State University, where he is studying global health with an emphasis on mental health promotion and substance abuse prevention. He is also a Graduate Research Assistant with the Coast to Forest Project, a collaboration between the OSU Extension Family and Community Health Program and the OSU Center for Health Innovation. Before his involvement with OSU, Ivan spent time working as a drug, suicide, and gambling prevention coordinator for a county health department. He is also a certified and active Mental Health First Aid and Question, Persuade, Refer (QPR) trainer.

Accomplishments

- Publications: One manuscript published.



Prema Filippone, MSW

**Doctoral Student Doctoral Research Assistant,
Instructor Social Work, Columbia University**

Mentors

Primary Mentor: Lindsay Stark, PhD

Secondary Mentor: Ilana Seff, PhD

Project Title

**COVID-19 in Humanitarian
Settings: How are the Safety and
Well-Being of Women and Girls
Affected?**

Biography

Prema Filippone is a doctoral candidate at the Columbia School of Social Work. Prema is interested in how systematic exclusion, stigmatization and discrimination serve as drivers for health disparities in local and global communities. Her research examines the effects of intersectional stigma and discrimination on women's health decisions, engagement in care, and overall health outcomes. She currently studies the effects of innovative interventions in resource-limited environments that address structural barriers to effective HIV/STI prevention among women impacted by poverty, gender-based violence and syndemic conditions—HIV/AIDS, substance abuse, and mental illness. Prema is an affiliate of the Cogburn Research Group at Columbia University School of Social Work. She holds an MS in Social Work from Columbia University and BA in Sociology and Psychology from Rutgers University.

Accomplishments

- Publications: One manuscript published; two in-progress; two under revision.
- Poster presentations at the 25th Annual Conference of the Society for Social Work and Research, Virtual Conference:
 - "PrEP Knowledge, Attitudes, and Use Among Vulnerable Women Engaged in Sex Work in Uganda: Implications for HIV Prevention"
 - "Prevalence of Sexually Transmitted Infections (STIs) and HIV in Economically Vulnerable Women Engaged in Sex Work in Uganda: Implications for HIV Care and Treatment Engagement"
- Teachings:
 - Lead Instructor, Columbia School of Social Work, New York, NY
 - T6416 Program Evaluation for Social Services
 - T7100 Foundations of Social Work Practice: Decolonizing Social Work
 - Co-facilitator (5 Sessions), "Underrepresented in Medicine (URiM) Microaggression Intervention Workshop Series" at Columbia University Vagelos College of Physicians and Surgeons.
 - Seminar in Foundations in Clinical Medicine: Race Conversations at Columbia University Vagelos College of Physicians and Surgeons.



Nicole Ford, MS

**Doctoral Student, Public Health and
Information Sciences, University of
Louisville**

Mentor

Shannon Lenze, PhD

Project Title

**Perinatal Depression among Black and
Women of Color: What Does it Mean to
Implement and Assess the Feasibility of
Mobile Health Technology in Urban
Clinics?**

Biography

Nicole Ford is a Dallas, Texas, native and is currently a PhD student in the School of Public Health in the Department of Health Promotion and Behavioral Sciences at the University of Louisville. She is a graduate research assistant at the

Youth Violence Prevention Research Center (YVPRC) and the Center for Social Justice Youth Development Research (CSJYDR). Her research interests are mental health, Black youth, health equity, and social justice. She received her bachelor's and master's degrees from Texas A&M University in Health and Health Education. She holds a certificate in Prevention Science and is certified in Youth Mental Health First Aid.

Accomplishments

- Publications: Nine manuscripts published.
- Co-instructor for an undergraduate public health course at University of Louisville.



Sirikanya Sellers, MD

Psychiatry Resident, PGY-1, Yale University

Mentors

Primary Mentor: Robert Paul, PhD Secondary

Mentor: Patricia Cavazos-Rehg, PhD

Biography

Dr. Sirikanya (Sanya) Sellers was born and raised in Bangkok, Thailand, and moved to Florida at the age of ten. As an undergraduate at the University of Florida, Dr. Sellers earned a dual degree in Biochemistry and International Studies. She then spent a year studying Mandarin at Fudan University in Shanghai, China. At the University of Central Florida College of Medicine, she co-founded Chapman Compassionate Care, a student-run monthly skin-and-wound-care clinic serving the Orlando homeless community. Her commitment to helping marginalized communities led her to also spend a month in Lesbos, Greece, where she volunteered at the Kara Tepe refugee camp for asylum seekers. Her passion for mental and public health also translated into her spearheading another new organization, Rising Youth, a 501(c)3 nonprofit that provides mentorship and education about mental wellness skills for high-school students. Dr. Sellers is currently a psychiatry resident at Yale and is the resident leader for the Yale Global Mental Health program. She is committed to social justice and is interested in pursuing public policy work, global mental health, and serving vulnerable and underserved populations.

Project Title

Impaired Neurocognition in Children with Perinatal HIV and Monocyte Activated Inflammatory Markers



Callie Walsh-Bailey, MPH

Doctoral Student, Public Health Sciences, Washington University in St. Louis

Mentor

Juliet Iwelunmor, PhD

Biography

Callie Walsh-Bailey is a Public Health Sciences doctoral student at Washington University in St. Louis. Callie earned an MPH in international health from Oregon State University and a BA in biology and Spanish from Willamette University. Prior to coming to Washington University, Callie was a research specialist at Kaiser Permanente Washington Health Research Institute where her work focused on primary care quality improvement and implementation science in mental health. Her interest in global health stems from ethnobotanical research and healthcare volunteer experiences while living in Ecuador. Her current research focuses on the intersection of implementation science, health equity, and chronic disease prevention. Callie is interested in implementing evidence-based practices in resource-limited settings and building community-clinical linkages to address basic resource needs and improve healthcare quality.

Project Title

How Do Communities in Low-and-Middle-Income Countries Define Sustainability of Evidence-Based Interventions? A scoping review

Accomplishments

- Publications: 11 manuscripts published; two under review; and two in-progress.

- Teaching: Research Methods in Public Health, Brown School, Washington University in St. Louis.
- Guest speaker: Measurement in D&I Science, Dissemination and Implementation Science (MPHS), Washington University in St. Louis School of Medicine.
- Presentations at the 14th Annual Conference on the Science of Dissemination and Implementation in Health, virtual:
 - Poster, “A Scoping Review of De-Implementation Frameworks and Models”.
 - Poster, “Identifying Optimal Strategies for Transition Program Implementation for Adolescents with Sickle Cell Disease”.
 - Oral, “Youth-Led Implementation Strategies to Promote HIV Self-Testing in Nigeria with ERIC Compilation”.
- Other Presentations:
 - “A Qualitative Analysis of Patient- and Provider-Perceived Barriers and Facilitators to Cascade Genetic Testing for Hereditary Breast, Ovarian, Endometrial and Colorectal Cancer,” Siteman Cancer Center Cancer Research Symposium.
 - “Rural Health Promotion Interagency Collaboration Before and During the COVID-19 Pandemic,” National Association of County and City Health Associations Annual Conference (virtual).
 - “Usability Testing of a Novel, Health Information Technology Tool for Behavior Change Among Adolescents,” the Society of Behavioral Medicine Annual Meeting, virtual.
 - “Engaging Stakeholders to Develop and Pilot an Approach to Tailoring Implementation Strategies,” Evidence and Implementation Summit, Sydney, Australia (virtual).
 - “A Pilot Study of a Novel Systematic Approach to Tailoring Implementation Strategies,” Evidence and Implementation Summit, Sydney, Australia (virtual).

LEAD Postdoctoral Research Associates



Lindsey Filiatreau, PhD, MPH
Postdoctoral Research Scholar, Psychiatry,
Washington University in St. Louis

Mentors

Primary Mentor: Patricia Cavazos-Rehg, PhD
Secondary Mentor: Mary McKay, PhD

Research Project

Addressing Mental Health and Substance Use Disparities among Key Populations in Resource-Constrained Settings

Biography

Dr. Lindsey Filiatreau recently completed her PhD in Epidemiology at the University of North Carolina at Chapel Hill with an interest in global mental health and HIV prevention and care. In her dissertation work, Dr. Filiatreau characterized differences in longitudinal HIV care continuum outcomes before and after implementation of South Africa’s Universal Test and Treat policy and explored the relationship between key psychosocial stressors (e.g., depressive symptoms, low social support, etc.) and HIV treatment outcomes among youth with HIV in rural South Africa. Before joining the Epidemiology doctoral training program, Lindsey completed her MPH degree at the University of Ghana, Legon, and worked in direct HIV service provision as a Health Educator and HIV Testing Services Coordinator in Indianapolis and Chicago. In her post-doctoral training, Lindsey is eager to explore the causal effects of co-occurring psychosocial stressors on HIV treatment outcomes and formalize her training in implementation science methods. Ultimately, she seeks to apply her research to the design and scale-up of effective mental health interventions for people with HIV in resource-constrained settings.

Accomplishments

- Publications: Seven manuscripts published; four under review; and four in-progress.
- Funding received: McDonnell Academy Global Incubator Seed Grant, Washington University in St. Louis. “Developing and refining a mobile health intervention protocol to address depressive symptoms among youth living with HIV (YLHIV) in Uganda.” Role: Co-I. Funding period: 10/1/21 – 9/30/22. (\$20,000 direct costs, PI: Nabunya/Cavazos-Rehg)
- Conference presentations:

- “Optimizing SARS-CoV-2 pooled testing strategies through incorporation of simple to implement symptom and exposure screening tools,” oral presentation at the Society for Epidemiologic Research Annual Meeting (virtual).
- “Direct and indirect effects of the SARS-CoV-2 pandemic on mortality in the US: Differences by age, sex, race/ethnicity and region,” oral presentation at the Society for Epidemiologic Research Annual Meeting (virtual).



Nhial Tutlam, PhD
Postdoctoral Research Scholar, Social Work, Washington University in St. Louis

Mentor
Fred Ssewamala, PhD

Research Project

Seeking to Understand the Impact of Adversity on the Mental Health of Youth and Adults from Communities that Have Faced Multiple Adversities Ranging from HIV to Armed Conflicts and Designing Interventions to Improve their Mental Health Outcomes

Biography

Dr. Nhial Tutlam earned his BS degree in biology from Tennessee State University and both his MPH and PhD degrees from Saint Louis University. He was most recently the Chronic Disease Epidemiology Program Manager in the Division of Health Promotion and Public Health Research at Saint Louis County Department of Public Health (DPH), where he oversaw chronic diseases and mental health surveillance. Dr. Tutlam was also the Project Director for Project RESTORE, a four-year, \$1.7 million minority youth violence prevention project funded by the Office of Minority Health in the U.S. Department of Health and Human Services. In addition, Dr. Tutlam is an adjunct instructor of epidemiology at the Brown School at Washington University in St. Louis and teaches a chronic disease prevention course at Lindenwood University. His research interests include chronic diseases, maternal and child health and intergenerational impact of war trauma of South Sudanese people. As part of his postdoctoral training, Dr. Tutlam participated as a trainee in the inaugural cohort of the LEAD Global Training Program summer training program in 2021.

Accomplishments

- Publications: Three manuscripts under review; three in progress.
- Instructor, Foundations of Public Health: Epidemiology at the Brown School, Washington University in St. Louis.
- Concept paper submitted to the Missouri Foundation for Health, "Community-based organizations collaboration with public health agencies to improve mental health of resettled refugee families."
- Grants submitted:
 - National Institute on Drug Abuse/NIH/DHHS - R34, "Resettled Refugee Families for Substance Use Prevention (RRF4SUP): Feasibility and Acceptability Study"
 - McDonnell Scholars Academy, "A Pilot Study to Examine the Impact of the COVID-19 Pandemic on Menstrual Hygiene Practices among Young Adults Living with HIV in Western Uganda"
 - Grand Challenges Canada, "Investigating the Youth Readiness Intervention Integrated within Youth Economic Empowerment (YRI+YEE) to Improve Trauma-Associated Psychological Distress among South Sudanese Youth."

Capacity Building Leadership

Executive Steering Committee



Fred Ssewamala, PhD

Co-Director – CHILD-GRF, LEAD, and RRT

William E. Gordon Distinguished Professor; Associate Dean for Transdisciplinary Faculty Research; Director of ICHAD and SMART Africa Centers; Brown School, Washington University in St. Louis; Professor of Medicine, Washington University School of Medicine

Dr. Ssewamala is the Founding Director of ICHAD and the Director of the SMART Africa Center. His global research, funded by a consortium of institutions including the US government through NIMH and NICHD, focuses on improving health/mental health and developmental outcomes for vulnerable children and adolescents and creating innovative combination interventions for communities affected by poverty and HIV/AIDS.



Mary McKay, PhD

Co-Director – CHILD-GRF and RRT

Vice Provost of Interdisciplinary Initiatives, Washington University in St. Louis

Dr. McKay has received substantial federal funding for research focused on meeting the mental health and health prevention needs of youth and families impacted by poverty. She has significant expertise in child mental health services and implementation research methods, as well as over 20 years of experience conducting HIV prevention and care-oriented studies, supported by the NIH. She has been the PI on studies set in Sub-Saharan Africa since 2000.



Patricia Cavazos, PhD

Co-Director, LEAD

Professor, Vice Chair for Diversity, Equity and Inclusion in the Department of Psychiatry, Director, Mentored Training Program in Clinical Investigation

Dr. Cavazos is a clinically trained licensed psychologist who has been involved in biomedical research for over ten years. Her research is funded by the NIH and involves studying the most efficacious policies that will reduce substance use involvement while accounting for today's new media-saturated environment. She is a member of an underrepresented minority group (Hispanic/Latina), and understands the importance of enhancing diversity in the workforce.



Sean Joe, PhD

Co-Director, RRT

Benjamin E. Youngdahl Professor of Social Development; Director, Race and Opportunity Lab; Brown School, Washington University in St. Louis

Dr. Joe is a nationally recognized authority on suicidal behavior among African Americans. His research focuses on Black adolescents' mental health service use patterns, the role of religion in Black suicidal behavior (NIMH), salivary biomarkers for suicidal behavior, and development of father-focused, family-based interventions to prevent urban African American adolescent males from engaging in multiple forms of self-destructive behaviors.



Noeline Nakasujja, PhD

Co-Director – CHILD GRF

Associate Professor, Psychiatry, Makerere University in Uganda

Dr. Nakasujja's research focuses on mental health, in particular, evaluating special populations of HIV positive individuals. She is currently a Principal Investigator on a study evaluating the stress and caregiver burden of individuals looking after patients with Alzheimer's disease in the community. She has an impressive record as a department chair and mentor, serves on several international associations and has received numerous recognitions and honors for her scientific achievements.



Proscovia Nabunya, PhD

Co-Investigator – LEAD and CHILD-GRF

Research Assistant Professor, Social Work, Washington University in St. Louis

Dr. Nabunya's research focuses on HIV-stigma reduction interventions, family and community-based support systems as protective factors for the development and well-being of children and families impacted by HIV/AIDS. She has research expertise in poverty-reduction strategies that utilize asset-based interventions and their impact on the social, economic and health well-being of children and families in HIV-impacted communities in sub-Saharan Africa.



Ozge Sensoy Bahar, PhD

Co-Investigator – LEAD and CHILD-GRF

Research Assistant Professor, Social Work, Washington University in St. Louis

Dr. Sensoy Bahar's research focuses on child and family well-being in global contexts characterized by poverty and associated stressors. Her current research program focuses on youth experiences of child work and labor, as well as the individual, family, and contextual factors leading to child labor in two country contexts, Turkey and Ghana. The goal of her work is to develop culturally and contextually relevant interventions to reduce risk factors associated with child labor.

Training Advisory Committee



Theresa Betancourt, ScD

Professor, School of Social Work, Global Practice, Boston College

Dr. Betancourt's research interests include developmental and psychosocial consequences of concentrated adversity on children, youth and families; resilience and protective processes in child and adolescent mental health and child development; refugee families; and applied cross-cultural mental health research. She is Principal Investigator of an intergenerational study of war/prospective longitudinal study of war-affected youth in Sierra Leone (LSWAY).



Arvin Bhana, PhD

Honorary Associate Professor of Psychology, University of KwaZulu-Natal, Durban, South Africa

Dr. Bhana's research focuses on understanding risk and resilience, adolescent risk-taking behavior (including HIV/ AIDS), and substance abuse and mental health. He has been the Principal Investigator or Co-Investigator of several NIH-funded research projects in South Africa supporting Perinatally HIV-infected Youth. His recent publications examine the role of family protective factors in improving mental health and behavioral outcomes and reducing the risk for STIs among children and youth.



Mario Castro, MD

Division Chief, Pulmonary/Critical Care, University of Missouri-Kansas City School of Medicine

Dr. Castro serves as the principal investigator for the Kansas City site of the American Lung Association Asthma Clinical Research Centers (ACRC) and Chairs the Protocol Committee for ACRC. He is studying what makes severe asthma different from milder forms in the Severe Asthma Research Program (SARP). He is also studying potentially new treatments and biomarkers for severe asthma in the Precision Interventions for Severe and Exacerbation-prone asthma (PrecISE) study.



Tonya Edmond, PhD

Co-Interim Dean, Brown School, Washington University in St. Louis

Dr. Edmond serves as the Brown School's associate dean for social work, and is a faculty fellow in the Office of the Provost working on women faculty leadership development and other diversity and inclusion initiatives. As a faculty affiliate with the Center for Violence and Injury Prevention and the Center for Mental Health Services Research, she focuses her research on testing the effectiveness of interventions for survivors of childhood sexual abuse, sexual assault, sex trafficking and intimate partner violence.



Keng-Yen Huang, PhD

Associate Professor, Population Health, New York University School of Medicine

Dr. Huang's research interests include child development, psychiatric epidemiology, prevention, implementation, and global public health research. She is the principal and co-investigator on numerous NIH and Foundation funded child development and mental health implementation research projects in international contexts. Her current research efforts focus on child mental/behavioral health implementation and epidemiological research both in low-and middle-income countries (LMICs) and in the US.



Godfrey Kigozi, MBChB, MPH

Director of Research, Rakai Health Sciences Program, Uganda

A medical doctor by training, Dr. Kigozi has overseen a number of complex RHSP studies, including the effects of STD control on maternal and infant health. He served as the medical officer for the "Trial of Male Circumcision" studies and achieved compliance and follow-up rates of over 90 percent. For over 10 years, he has been a medical consultant on several of ICHAD and SMART Africa's NIH funded studies.



Abel Mwebembezi, PhD

Executive Director, Reach the Youth – Uganda

Dr. Mwebembezi has worked to implement reproductive health and HIV/AIDS projects and managed multiple child sponsorship education programs. He has served as a Planning Officer with the UN Peace Keeping Mission at the UN African Union Mission in Darfur and has been an implementation partner on several NIH-funded research projects (PI, Dr. Fred Ssewamala) testing asset-based economic empowerment interventions for youth impacted by poverty and HIV/AIDS.



Timothy Opobo, MSC

Executive Director, AfriChild Centre

Mr. Opobo has ten years of development practice experience. He previously served as Acting Executive Director of the AfriChild Centre and also worked with the African Network for the Prevention and Protection against Child Abuse and Neglect in Uganda and Liberia. His primary interests are social challenges affecting children and young people in Sub-Saharan Africa.



Lourdes Soto de Laurido, EdD

Associate Dean, Academic Affairs, University of Puerto Rico

Dean Soto de Laurido's special interests are the implications of research and health promotion programs design that empower global agreements, services collaboration, mentoring, coaching and research coaching. She is furthering the need for rigorous research methods for clinical and translational research, community base participatory research (CBPR), health promotion program design and statistical indicators for risk behaviors and resilience consider non-communicable diseases risk factors.



In memoriam

David Patterson Silver Wolf, PhD

In May, we lost a dedicated Training Advisory Committee member and a true champion for the advancement of social work students and trainees from underrepresented backgrounds. We are grateful to Dr. Patterson Silver Wolf for his service, dedication, and contribution to future generations of researchers. He is dearly missed.

Acknowledgments

ICHAD's capacity building team would like to thank our funders: The National Institute of Child Health and Human Development, the National Institute for Mental Health, the National Institute on Minority Health and Health Disparities, and Fogarty International Center.

We would also like to express our deepest appreciation to the experts who shared their work and expertise at our Summer Training events. They include Susannah Allison, Ishmael Amarreh, Ellis Ballard, Ana Bauman, Bishop Luther Baker, Geetha Bansal, Theresa Betancourt, Arvin Bhana, Leopoldo Cabassa, Holly Campbell-Rosen, Patricia Cavazos Rehg, Saltanat Childress, Elvin Geng, Ross Hammond, Jenine Harris, Keng-Yen Huang, D'Juan Huddleson, Sean Joe, Mike Jones, Eugene Kinyanda, Manasi Kumar, Nikole Lobb Dougherty, Muthoni Mathai, Anne Mbwaiyo, Mary McKay, Nicole Moore, James Mugisha, Barbara Mukasa, Abel Mwebembezi, Noeline Nakasujja, Janet Nakigudde, Harriet Namboozee, Timothy Opobo, Jay Piccirillo, Byron Powell, Jonathan Purtle, Ilana Seff, Vincent Sezibera, Mortdecai Tayebwa, Erise Williams, Susan Witte, Jean Marie Vianney Havugimana, and Peter Yaro.



Washington
University in St. Louis
BROWN SCHOOL



ichad@wustl.edu



ichad.wustl.edu



facebook.com/washuichad



[@washu_ICHAD](https://twitter.com/washu_ICHAD)



SECURING OUR
CHILDREN'S
FUTURE TODAY