



INTERNATIONAL CENTER FOR CHILD HEALTH AND DEVELOPMENT

ANNUAL REPORT

2023



10 Years of Creating Impact and Offering Hope

TABLE OF CONTENT

Our Mission	i
Acknowledgements	ii
Introduction from Founding Director	1
Message from the Dean	2
ICHAD by the Numbers	3
10th Anniversary Celebrations	4
ICHAD's Decade of Impact: Scovia Nassazi Shares Her Story	6
Capacity Building	8
2023 Annual Forum	10
Research Projects	11
2023 ICHAD Speaker Series	23
Conference Presentations	24
ICHAD-U.S. Team	26
ICHAD-Uganda Team	27
Faculty Affiliates	30
Global Affiliates	32
List of Publications	33

Our Mission

To contribute to the reduction of poverty and improvement of public health outcomes for children, adolescents and families in low-resource communities, particularly those in Sub-Saharan Africa and other developing nations, through:



1

Innovative applied intervention research



2

Capacity building opportunities for a new generation of scholars



3

Raising public awareness and support for economic empowerment interventions



4

Informing public policy and programming

Acknowledgment

ICHAD would like to thank our staff, partners, and collaborators for their hard work and continued dedication to ICHAD's mission. Special thanks go to our funders: The National Institutes of Health, the Eunice Kennedy Shriver National Institute of Child Health and Human Development, the National Institute of Mental Health, the National Institute on Minority Health and Health Disparities, Fogarty International Center, Barbara and Marc Arnold, Ms. Cynthia Williams, the McDonnell International Scholars Academy and the Brown School. We also are grateful to our Washington University in St. Louis campus partners for their ongoing and unwavering support, including Dean Dorian Traube and the Brown School, Washington University's Office of the Provost, the Institute for Public Health's Global Health Center, and Washington University Marketing and Communications.

We would like to thank our global collaborating partners, including Reach the Youth-Uganda, ChildFund International, Rakai Health Sciences Program, Uganda Cancer Institute, AfriChild Centre, Mildmay-Uganda, Centenary Bank, Stanbic Bank, Equity Bank, Masaka Catholic Diocese, Mayor Hon. Florence Namayanja of Masaka, and district leaders across the seven geopolitical districts in the Greater Masaka region, the Uganda Ministries of Health and Education, as well as Basic Needs Ghana and BIBIR Ghana. We are grateful for the collaboration of partner universities across Sub-Saharan Africa including Makerere University, University of Ghana, University of KwaZulu-Natal, University of Makeni, University of Nairobi, and University of Rwanda. We are also grateful for our U.S.-based collaborating partners, which include Boston College, Columbia University, New York University, University of California-Los Angeles, University of California-San Francisco, University of Chicago, and University of Illinois-Chicago.

We would also like to express our deepest appreciation to the faculty, partners, and experts who shared their expertise through our ICHAD Speaker Series, conferences, and research training events in 2023. They include Penina Acayo Laker, Patricia Akweongo, Susannah Allison, Stella Ayo Odongo, Philip Baiden, Geetha Bansal, Laura Benoist, Theresa Betancourt, Arvin Bhana, Rachel Brathwaite, Erica Bumpers, Holly Campbell-Rosen, Patricia Cavazos-Rehg, Saltanat Childress, Anne Cleary, Jeannette Cooperman, Thomas Crea, Rebecca Esliker, Elvin Geng, Keng-Yen Huang, Leyla Ismayilova, Robin Jarrett, Sean Joe, Fr. Joseph Kato Baluku, Grace Kigozi, Agnes Kiragga, Samuel Kizito, Mondo Kyateka, Ryan Lindsay, Nikole Lobb Dougherty, Chenyang Lu, Tom Lutalo, Simba Machingaidze, Thomas Malkowicz, Muthoni Mathai, Mary McKay, James Mugisha, Barbara Mukasa, Massy Mutumba, Abel Mwebembezi, Lydia Najjemba Wasula, Noeline Nakasujja, Gertrude Nakigozi, Harriet Nambooze, Flavia Namuwonge, Ijeoma Opara, Timothy Opobo, Byron Powell, Vijay Ramani, Roumy Theunissen, Vetta Sanders Thompson, Ilana Seff, Vincent Sezibera, Elizabeth Sperber, Agnes Ssebowa, Davis Ssenabulya, Lindsay Stark, Mordecai Tayebwa, April Thames, Yesim Tozan, Nhial Tutlam, Stevan Weine, Cynthia Williams, and Susan Witte.

Our work would not be possible without the support of the teaching and administrative staff at each of the participating schools, the healthcare workers and clinic staff at each of the collaborating 48 health centers and clinics, as well as the community health workers and parent peers. Finally, we extend our sincere gratitude to all participating children, adolescents and their caregivers, and the women who are the inspiration for the work we do.

With gratitude,

The ICHAD Team

Introduction from ICHAD Founding



Dear Esteemed Colleagues,

It is with great pleasure that I present the 2023 Annual Report for the International Center for Child Health and Development (ICHAD). On behalf of Co-Directors Dr. Proscovia Nabunya and Dr. Ozge Sensoy Bahar and our team of close to 100 research staff in the U.S. and Uganda offices. I am thrilled to commemorate the accomplishments of the past year, which holds a special significance as we celebrated the important milestone of ten years as an independent global health research center.

The most significant outcomes of this year ranged from the launch of several new studies, including our extension in Northern Uganda refugee camps, to the successful 10th Anniversary Celebration in St. Louis attended by Mondo Kyateka, Honorable Commissioner for the Department of Youth and Children Affairs at the Uganda Ministry of Gender, Labour and Social Development, and the Annual Forum held in Uganda, which saw the participation of more than 1,200 individuals from civil society, academia, government, and diplomatic missions. We also welcome Dr. Nihal Tutlam, Assistant Professor at Brown School, as the Associate Director of Research for our ICHAD U.S. office.

Offering Hope

Early in 2023, our partners at Washington Magazine released a documentary film, *Offering Hope*. This film tells the story of how my early years as an orphan child in Uganda led me to engage in the work that I do, focused on children, adolescents, and families, and eventually establishing ICHAD. It was an honor to have my story told so beautifully and poignantly by the talented communications team at Washington University in St. Louis, and it's a privilege to be able to share it with you. You may view the documentary at <https://bit.ly/3IXVGNL>.

Collaboration is Key

I consider ICHAD to be a family of researchers, collaborators, and the children and families we serve. With that in mind, our achievements would not be possible without the dedication and collaboration of our talented team and committed partners, and the support of our funders. Together, we have made commendable progress in advancing the field of child and adolescent health and development, bringing hope to countless individuals and families around the world.

We should all be committed to doing research that is impactful and relevant to the communities and families we work with. We should all build on our successes and address existing challenges to creating sustainable solutions that promote the well-being of children globally.

Thank you,

Fred M. Ssewamala

Founding Director of ICHAD

Brown School

Washington University in St. Louis

Message from the Dean



Greetings Colleagues,

On behalf of the Brown School at Washington University, I am thrilled to present the annual report for the International Center for Child Health and Development (ICHAD). This report culminates the hard work of all those who have dedicated their time, passion, and resources to advancing the essential work carried out by ICHAD during their tenth anniversary year.

As we reflect on the past year and decade, it is my pleasure to recognize the ways in which ICHAD's work advances the core commitments of the Brown School's strategic plan, Driving Equity 2030. With a focus on rigorous science, transformative education and mutually beneficial partnerships, we strive to foster an environment that promotes social justice and empowers individuals and communities.

In line with these priorities and led by founding director, Dr. Fred Ssewamala, ICHAD has made significant strides in improving child health and development through innovative research, policy advocacy, and community engagement, primarily in Sub-Saharan Africa. The relentless efforts of the ICHAD team have allowed us to make substantial contributions in understanding and promoting child well-being. ICHAD aims to bridge the gap between knowledge and action, using evidence-based approaches to drive meaningful change. Through interdisciplinary collaboration and a commitment to excellence, the ICHAD team remains steadfast in their dedication to improving the well-being of children and families.

I would like to express my deepest gratitude to everyone involved in supporting ICHAD's mission. Whether it be through research collaborations, funding partnerships, or research education and training, your contributions have been instrumental in ICHAD's accomplishments.

As we move forward, let us continue to work together, harnessing the power of research, advocacy, and community engagement to build a brighter future for all children. Together, we can make a lasting impact on child health and development.

Sincerely,

Dorian Traube

Neidorff Family and Centene Corporation Dean
Brown School
Washington University in St. Louis

ICHAD by the Numbers – 2023

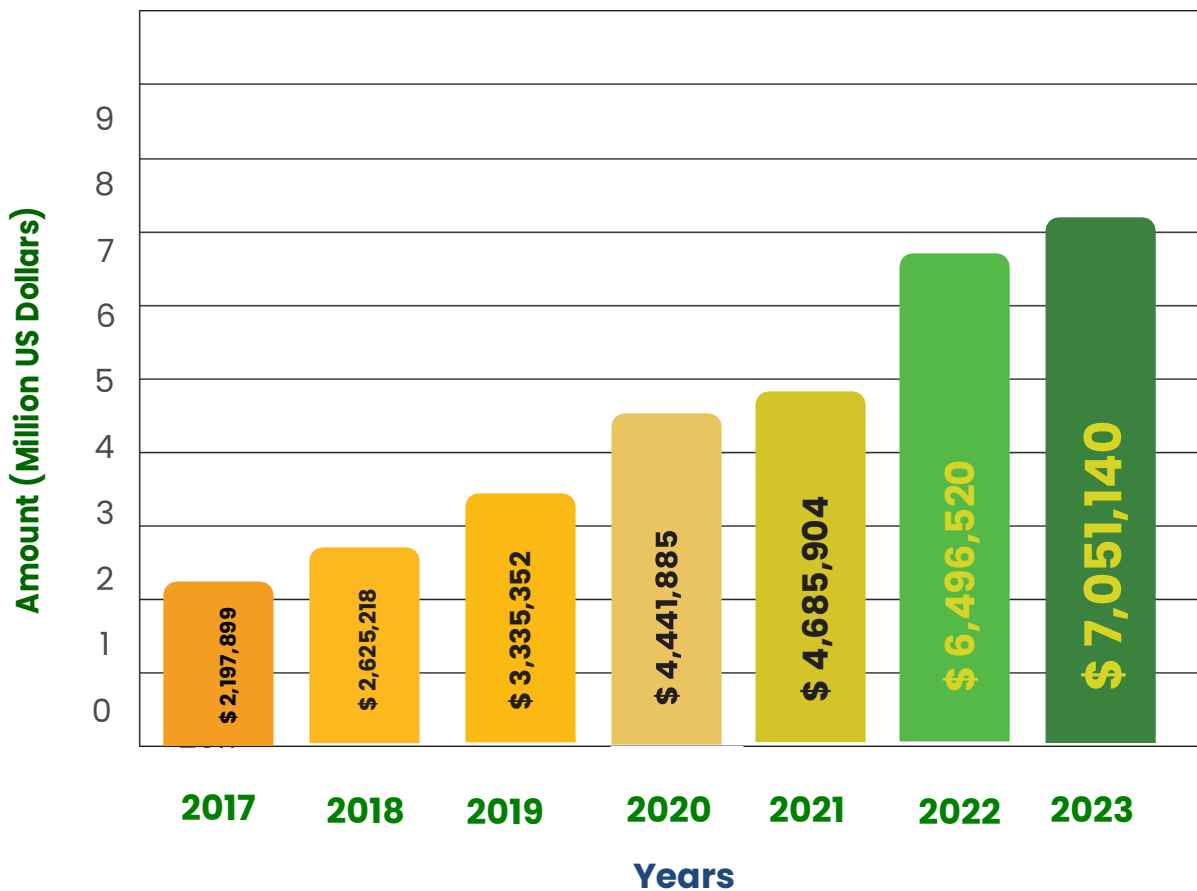
Administration



Research Impact



ICHAD's Fundings 2017 to 2023





ICHAD'S 10th Anniversary Celebrations

On April 11th, ICHAD celebrated 10 years as a research center with an unrelenting commitment to disrupt the cycle of poverty in Sub-Saharan Africa. The celebration was held virtually and in-person at the Brown School at Washington University in St. Louis. The ICHAD team was deeply humbled by the attendance of many esteemed guests from across the U.S., Sub-Saharan Africa, and around the globe. There were many happy and tearful moments shared throughout the day as we reflected on ICHAD's growth and impact and our partnerships with so many individuals and groups committed to the health and wellbeing of children and families.

Timothy Opobo, Executive Director of AfriChild Center at Makerere University in Kampala, Uganda, and longtime ICHAD partner, served as the Master of Ceremonies, ushering participants through ICHAD's timeline with presentations and vibrant panel discussions. Among the esteemed guests in attendance were Andrew Martin, Chancellor of Washington University in St. Louis; Beverly Wendland, Provost and Executive Vice Chancellor for Academic Affairs; and Mary McKay, Vice Provost of Interdisciplinary Initiatives. We also welcomed Mondo Kyateka, Honorable Commissioner for the Department of Youth and Children Affairs at the Ministry of Gender, Labour and Social Development in Uganda; Ms. Agnes Ssebowa, Senior Public Health Specialist at Uganda Ministry of Health; Ms. Lydia Najjemba Wasula, Child Protection Specialist, Uganda Ministry of Gender, Labour, & Social Development; Ms. Stella Ayo-Odongo, Director, Pathfinding Countries, Global Partnership to End Violence Against Children (UNICEF); Mr. Simba Machingaidze, Country Director, ChildFund Zambia.

Guest speakers, panelists, and participants who have been at the forefront of pioneering ICHAD's vision shared compelling stories of how working and collaborating with ICHAD has impacted their career and lives. As part of the ICHAD Speaker Series, Dr. April Thames, Professor of Psychiatry at UCLA, presented her talk, "The Importance of Cognitive Screening and Psychosocial Assessment in Medically Compromised Populations". The day also featured a screening of the documentary *Offering Hope*, which tells the story of Dr. Fred Ssewamala's journey behind the impactful work we undertake at ICHAD, followed by insightful conversation with the WashU Marketing and Communications documentary production team. The day was concluded with closing remarks by Vice Provost for Graduate Education and International Affairs, Vijay Ramani.

Participants in person and on Zoom were engaged throughout the day. One participant shared, "Congratulations to Dr. Fred and to all those who have worked so hard on this program. You have all touched the lives of the future and made an amazing positive impact on so many! What an incredible accomplishment! Thank you for all you do!"

View the 10th Anniversary Celebration full program at <https://ichad.wustl.edu/wp-content/uploads/2023/04/10th-Anniversary-Program.pdf>

Ten Years of Creating Impact & Offering Hope



2005



Dr. Fred Ssewamala receives first NIH R21 grant, A Family-Based Economic Empowerment Model for Orphaned Children in Uganda (Suubi)

2013



ICHAD established at Columbia University

2014



1st Annual Conference, Global Health and Economic Strengthening in Sub-Saharan Africa, University of Chicago

2016



SMART Africa Center established



1st Annual Conference on Child Behavioral Health in Sub-Saharan Africa, Uganda

2017



ICHAD relocates to WashU



ICHAD reaches 5 NIH funded studies:

- Suubi (2005-2008; NIHM)
- Suubi Maka (2008-2012; NIMH)
- Bridges to the Future (2011-2018; NICHD)
- Suubi+Adherence (2012-2018; NICHD)
- Suubi4Her (2017-2023; NIMH)

2018



Researcher Resilience Training (RRT)

RRT Research Training Program, funded by NIMH (2018-2028)

2019



LEAD Global Research Training Program funded by MHRT (2019-2024)

2020



CHILD-GRF Research Training Program, funded by FIC and NICHD (2020-2024)



ICHAD reaches 10 NIH funded studies:

- Suubi4Cancer (2018-2021; NCI)
- Kyaterekera (2018-2023; NIMH)
- Anzansi Family Project (2019-2022; NICHD)
- Suubi4Stigma (2020-2022; NIMH)
- Suubi+Adherence-Round 2 (2020-2025; NICHD)

2022



ACHIEVE Global Training Program funded by FIC (2022-2027)



ICHAD reaches 15+ NIH funded studies:

- M-Suubi (2021-2026; NIMH)
- Obuvumu (2022-2024; NIMH)
- Bridges2Scale (2023-2027; NICHD)
- Bridges-Round 2 (2022-2026; NIMH)
- Suubi4Stronger Families (2022-2027; NIMH)
- Substance Use Study (2020-2025; NIMH)
- Suubi+Adherence4Youth (2022-2027; NIMH)
- Suubi-Mhealth (2022-2024; NIMH)



2022 Forum on Child and Adolescent Global Health Research and Capacity Building in Uganda

2023



Dr. Fred Ssewamala and ICHAD featured in Washington Magazine; *Offering Hope* documentary released



2023 Forum on Child and Adolescent Global Health Research and Capacity Building in Uganda

A woman with dark hair pulled back, wearing a bright red button-down shirt, is sitting on a brown couch. She is smiling broadly, showing her teeth. The background is a blurred indoor setting with light-colored walls and a doorway.

**ICHAD'S
DECADE OF IMPACT:
SCOVIA NASSAZI
SHARES HER STORY**

ICHAD's Decade of Impact: Scovia Nassazi Shares Her Story

As we wrapped up our 10th anniversary celebrations, we sat down with Scovia Nassazi, a longtime member of the ICHAD team and a current Master of Social Work (MSW) student at the Brown School at Washington University in St. Louis, who graciously shared her story.

Scovia, your journey is incredibly inspiring. Let's start from the beginning. Could you tell us more about your upbringing in Rakai district, Uganda, and how the SEED project played a role in shaping your future?

I was born and raised in Rakai district, one of Uganda's most poverty-stricken areas with a high HIV prevalence. Losing my father to AIDS when I was just two years old left my mother as the sole breadwinner for our family. She worked tirelessly to provide for my two siblings and me. The SEED project, Dr. Fred Ssewamala's earliest intervention study, came as a beacon of hope for me. It introduced matched savings accounts for orphaned pupils like myself, helping us pay for school fees and scholastic materials. This support paved the way for me to complete my primary education and marked a turning point in my family's life.

Losing one or both parents can be an incredibly challenging experience, especially during crucial stages of your education. How did you navigate this difficult period?

I lost my mother while I was on the brink of completing my lower secondary education. This was undoubtedly the most challenging period of my life. However, with the support from the SEED project, I was able to stay focused. The mentorship I received, and the financial literacy trainings equipped me with the skills to manage my finances and even start a small business of selling pancakes and other goods after school. These endeavors, coupled with my determination, helped me push through this difficult time and continue my education.

It's remarkable how you managed to persevere despite facing such adversity. How did your journey lead you to ICHAD, and what impact has working there had on your life?

During my university years, I had the opportunity to work part-time as a student research assistant with ICHAD in Uganda.



Scovia Nassazi graduating from Muteesa I Royal University in 2016

This was a dream come true for me as it provided me with financial support to pay for my education and also offered invaluable field experience working with orphaned and vulnerable children. Over the past six years, I've held various positions at ICHAD both in Uganda and in the U.S., from research assistant to study coordinator and head of qualitative interviews, transcription, and translation. Working at ICHAD has not only allowed me to grow professionally but has also had a profound impact on my personal development.

What would you say has been the most significant impact of ICHAD on your life, and what message would you like to share with others facing similar challenges?

I have been fortunate to pursue further education in the U.S. I was admitted to the Brown School at Washington University in St. Louis with a full tuition Danforth Scholarship in Social Work, where I'm currently pursuing my MSW. These opportunities have been transformative, and I'm immensely grateful for them. The most significant impact of ICHAD on my life has been the unwavering support and opportunities it has provided me. From mentorship and financial assistance to professional growth and educational opportunities, ICHAD has opened doors that I never thought possible. To others facing similar challenges, I would say: never lose hope and always be open to seizing opportunities, no matter how small they may seem. With determination and support, you can overcome any obstacle and achieve your dreams.

Capacity Building

One of our strategic focus areas is creating capacity building opportunities for a new generations of scholars. In fulfillment of this commitment, ICHAD hosts four NIH-funded research-training programs: D43 ACHIEVE Training Program, D43 CHILD-Global Research Fellowship (CHILD-GRF), T37 LEAD Global Training Program (LEAD), and R25 Researcher Resilience Training Program (RRT). Research training programs are an integral part of ICHAD's capacity building efforts to grow opportunities for evidence-based interventions to support children, families, and communities in underserved areas.

Each of our four research training programs has a unique research focus area and target trainee population, and all are dedicated to supporting the next generation of researchers from underrepresented backgrounds to gain the skills and networks needed to lead multi-disciplinary, collaborative research teams. This year, we had 40 trainees across the four training programs, representing a variety of US and African institutions. 2023 was a productive and transformative year for our training programs. Trainees attended didactic training and career development sessions at the Forum on Child and Adolescent Global Health and Capacity Building (see page 9 for more information). Each trainee was matched with one or more mentors from Washington University in St. Louis or from one of our numerous global partner institutions to develop a research project, analyze data, draft a manuscript or apply for their own research funding. This multipronged approach allows our trainees to grow their research and networking skills.



320+

Manuscripts published by training program fellows and alumni



40

Trainees



40+

Conference and workshop presentations by training program fellows and alumni



40

Grants, fellowships, and awards received

LEAD Field Experiences: Due to pandemic-related travel restrictions, the first three cohorts of LEAD (2020-2022) participated virtually in their site-based mentored research experience. In 2023, LEAD offered the global mentored research experience in-person at a field site in a low-and-middle income country. LEAD summer trainees traveled to their global research study sites in Uganda and Sierra Leone to work with their mentors on an active health research project. This on-site mentored research opportunity gave the trainees first-hand experience in working in remote and low-resource research settings, community-based global research with their faculty mentors and allowed them to understand the intricacies of conducting community-based global research with their faculty mentors.

To catch a glimpse of our trainees' experiences at their research sites, visit the LEAD Trainee Blog at <https://sites.wustl.edu/lead/lead-global-research-notes-from-the-field>



CHILD-GRF Graduating Trainees: We celebrated the graduation of five CHILD-GRF trainees, who completed their three years as fellows in the program. Each trainee presented their research project accomplishments and next steps at the 2023 Forum on Child and Adolescent Global Health and Capacity Building and were presented certificates of program completion by program directors Dr. Fred Ssewamala, Dr. Mary McKay, and Dr. Noeline Nakasujja.

RRT Program Grant Renewal: The RRT program was awarded a five-year grant renewal to continue the program and build on its successful first five years of supporting advanced doctoral students and early career investigators of African descent interested in child and adolescent behavioral health, with the necessary research skills to address the significant challenges that exist within resource-poor settings. This new stage of the RRT grant adds additional mentorship, research training and financial resources for trainees to further enhance their success as independent researchers.

The ACHIEVE Training Program created a trainee blog in the summer of 2023 for the newest cohort of ACHIEVE trainees. Throughout the yearlong training program, trainees document the challenges, successes, and insightful moments as they implement their pilot research project at their global research sites. ACHIEVE Trainee Notes from the Field highlight each trainee's unique voice and perspectives and provide narrative and visual representations of their daily ACHIEVE work. Visit the blog at <https://sites.wustl.edu/achieve/trainee-blog>.

For a full report on ICHAD's training and capacity building programs, please read the 2023 ICHAD Capacity Building Report at <https://ichad.wustl.edu/ichad-capacity-building-report-2023>.



2023 ANNUAL FORUM ON CHILD AND ADOLESCENT GLOBAL HEALTH RESEARCH AND CAPACITY BUILDING

Following the resounding success of our in-person gathering in Uganda in 2022, ICHAD hosted trainees, implementing partners, program leadership, and guests from around the globe at the second annual Forum on Child and Adolescent Global Health Research and Capacity Building in Kampala and Masaka, Uganda, June 19–27, 2023.

The Forum began with an opening session in Kampala. Participants enjoyed addresses and plenary sessions that highlighted ICHAD's work with partners and impact in Uganda. Uganda Minister of Health, the Honorable Jane Ruth Aceng, delivered the Forum's keynote address, providing remarks that celebrated the contributions and accomplishments of ICHAD and stressed the need for further interventions in Uganda. She called for more ongoing collaboration to keep the momentum going to improve the lives of children in Uganda. The opening days of the Forum also featured panels of trainees and alumni. Additionally, staff and implementing partners provided first-hand accounts demonstrating the contributions and impact of ICHAD's work.

New to the Forum program this year were visits to the Parliament of Uganda and Makerere University College of Health Sciences. These visits enabled Forum participants to connect with policymakers and implementing partners, strengthen our common goals, and foster further collaboration. At Parliament, the guests visited the historical halls and discussed with Members of Parliament issues that affect the healthcare of children and vulnerable groups in Uganda. At Makerere University, guests learned more about the collaborations between Makerere University and Washington University in St. Louis and interacted with a panel of trainees and alumni of ICHAD's training programs who had affiliations with Makerere University.

The culminating days of the Forum included site visits to a variety of ICHAD research study sites including clinics, schools, and community-based organizations. Each site provided an overview of the aims, methodology, implementation, and impact of ICHAD's interventions. Trainees and Forum guests appreciated the unique opportunity to visit global research sites with data collection and community building in action. One Forum participant shared, *"The most valuable part for me was having the opportunity to meet other scholars and community members, which not only allowed me to make valuable connections, but to learn more about research and the work of ICHAD."*

For more information about the 2023 Forum on Child and Adolescent Global Health Research and Capacity Building, visit <https://sites.wustl.edu/childgrf/2023forum>

Research Projects

Newly NIH Funded Study



BRIDGES2SCALE (2023–2028)

Study Overview

In 2023, ICHAD led by Fred Ssewamala with colleagues Byron Powell at Washington University and Noeline Nakasujja at Makerere University was awarded \$3.5 million to study the implementation strategies for scaling up economic empowerment interventions in Uganda. Funded by the National Institutes of Health's Eunice Kennedy Shriver National Institute of Child Health and Human Development (NICHD), the new study, Bridges2Scale study (2023–2028), will examine the use of implementation strategies to best support the implementation, scale-up, and sustainment of the Bridges to the Future intervention. Bridges is a multi-component economic empowerment intervention that has demonstrated effectiveness on HIV prevention, care and support in four NIH-funded randomized control trials (RCTs) in Uganda and a foundation-funded study in Kenya.

The standard implementation strategy has been applied in our prior and ongoing studies and involves educational meetings that prepare staff members to deliver Bridges with minimal disruption to site workflow. This will be compared to an enhanced strategy that will be developed using Implementation Mapping, a systematic protocol for developing implementation strategies using theory, evidence, and stakeholder input. The study will use the public school system to recruit 1440 youth affected by HIV (ages 13–17 years) from 48 schools in the Greater Masaka region of Uganda.

Principal Investigators: Fred M. Ssewamala, PhD; Byron Powell, PhD; Noeline Nakasujja, PhD (Makerere University).

Project Team Members: Ozge Sensoy Bahar, PhD; Proscovia Nabunya, PhD; Rachel Brathwaite, PhD; Derek Brown, PhD; Mary McKay, PhD; Torsten Neilands, PhD (University of California San Francisco), Fred Semitala, PhD (Makerere University); Abel Mwebembezi, PhD (Reach the Youth Uganda).

Study Coordinators: Richard Bwogi; Vicent Ssentumbwe

Ongoing Research Projects



BRIDGES TO THE FUTURE-R2 (2022-2026)

Study Overview

Funded by the National Institute of Mental Health (NIMH), Bridges Round 2 study seeks to examine the longitudinal impacts of an economic empowerment intervention on HIV risk prevention and care continuum outcomes among orphaned youth transitioning to young adulthood. Given the unique vulnerabilities during the transition into young adulthood, it is critical to examine the long-term effectiveness of economic empowerment across the life course of youth orphaned by HIV. The study follows the Bridges cohort (N=1383 orphaned youth) for an additional 4-year period to address the following specific aims; *Aim 1*: Examine the long-term impact of *Bridges* on: HIV prevalence (measured via participant's HIV status); and explore in secondary analyses the long-term impact of *Bridges* on key developmental and behavioral outcomes (e.g., mental health, alcohol, and drug misuse); *Aim 2*: Elucidate the long-term effects of *Bridges* on potential mechanisms of change, including: a) economic stability, viral suppression (for ALHIV); PrEP use (for HIV negative adolescents), medical male circumcision (for boys); and b) young adult transitions; *Aim 3*: Qualitatively investigate participants' experiences with *Bridges* that may have influenced engagement with the program, sexual risk-taking decisions, financial behaviors; experiences with developmental transitions; and perceptions on program sustainability; *Aim 4*: To assess the long-term costs and benefits of *Bridges* using formal economic evaluation.

Principal Investigators: Fred M. Ssewamala, PhD; Ozge Sensoy Bahar, PhD; Proscovia Nabunya, PhD

Project Team Members: Patricia Cavazos-Rehg, PhD; Derek Brown, PhD; Shenyang Guo, PhD, Torsten Neilands, PhD (University of California – San Francisco); Abel Mwebembezi, PhD (Reach the Youth-Uganda); Barbara Mukasa, MBChB (Mildmay-Uganda); Noeline Nakasujja, PhD (Makerere University)

Study Coordinators: Winnie Kirabo; Godfrey Ssekikubo; Anita Kabarambi, MBChB; Julian Nalutaaya

BRIDGES- R2 AT-A-GLANCE

- 999** Participants completed wave 6 interviews – target reached
- 205** Participants re-consented and completed wave 2 interviews in 2023
- 614** Participants completed wave 7 interviews in 2023
- 2** Publications were posted



M-SUUBI (2021-2026)

Study Overview

Funded by the National Institute of Mental Health (NIMH), M-Suubi is a five-year study (2021- 2026) that examines the impact of a multilevel intervention combining group-based HIV stigma reduction training for educators (GED-HIVSR), multiple family groups (MFGs) for HIV stigma reduction (MFG-HIVSR), and with a family economic empowerment (FEE) intervention on HIV treatment adherence and engagement in care among Adolescents Living with HIV (ALHIV) attending boarding schools in Uganda. This randomized controlled trial is targeting adolescents living with HIV aged 10 to 17 years enrolled in a primary or secondary school with a boarding section. This study uses a 3-arm cluster randomized design across 42 HIV clinics in southwestern Uganda. Participants will be randomized at the clinic level to 1 of the 3 study conditions (n=14 schools; n=280 students per study arm).

The study has the following specific aims *Aim 1:* examine the impact of M-Suubi on HIV viral suppression (primary outcome) and adherence to HIV treatment, including keeping appointments, pharmacy refills, pill counts, and retention in care; *Aim 2:* examine the effect of M-Suubi on HIV stigma (internalized, anticipated, and enacted), with secondary analyses to explore hypothesized mechanisms of change and intervention mediation; *Aim 3:* assess the cost and cost-effectiveness of each intervention condition; *Aim 4:* qualitatively examine participants' experiences with HIV stigma, HIV treatment adherence, and intervention and educators' attitudes toward adolescents living with HIV and experiences with GED-HIVSR and program/policy implementation after training.

Principal Investigator: Fred M. Ssewamala, PhD; Massy Mutumba, PhD (University of Michigan)

Project Team Members: Proscovia Nabunya, PhD; Ozge Sensoy Bahar, PhD; Shenyang Guo, PhD; Penina Acayo Laker, MFA; Torsten Neillands, PhD (University of California – San Francisco); Yesim Tozan, PhD (New York University); Dr. James Mugisha, PhD (Kyambogo University); Deborah Padgett (New York University); Abel Mwebembezi, PhD (Reach the Youth-Uganda)

Study Coordinators: Rashida Namirembe, Jennifer Nattabi, Francis Matovu

M-SUUBI AT-A-GLANCE

840 Dyads recruited to date – target reached

427 Boxes of chalk given to 61 schools

547 Dyads recruited

176 Matched savings accounts opened for participants in 2023



Study Overview

Funded by the National Institute of Mental Health (NIMH), Suubi+Adherence4Youth unpacks and optimizes the Suubi multi-component intervention using the Multi-Phase Optimization Strategy (MOST), an engineering-inspired intervention framework. Suubi consists of; Financial Literacy Training; Incentivized Matched Youth Savings Accounts with income-generating activities; A manualized intervention for ART adherence and stigma reduction; Engagement with HIV treatment-experienced role models who share lived experiences of HIV.

This study's specific aims are; *Aim 1:* conduct a factorial experiment (optimization trial) to test the main effects of each of the four Suubi intervention components and combinations of components (interactions) on viral suppression (primary outcome); *Aim 2:* Test mediators and explore moderators that explain and modify the relationship between each of the four Suubi intervention components and viral suppression; and *Aim 3:* compare the cost and cost-effectiveness of each of the four Suubi intervention components and every combination of components.

A total of 576 ALHIV will be recruited from 48 health clinics, with randomization to one of the 16 conditions done at the health clinic level.

Principal Investigators: *Fred Ssewamala, PhD; John Saucedo, PhD (University of California, San Francisco)*

Project Team Members: *Proscovia Nabunya, PhD; Ozge Sensoy Bahar, PhD; Derek S Brown, PhD; Rachel Brathwaite, PhD; Torsten Neilands, PhD (University of California San Francisco) Marya Gwardz, PhD (New York University); Abel Mwebembezi, PhD (Reach the Youth-Uganda); Noeline Nakasujja, PhD (Makerere University)*

Study Coordinators: *Flavia Namuwonge, Allan Mugarura, Portia Nartey*

SUUBI+ADHERENCE4YOUTH AT-A-GLANCE

352 Participants recruited from 48 partner clinics

1 Manuscript published from study data in 2023



SUUBI4STRONGER FAMILIES (2022-2027)

Study Overview

Suubi4stronger families addresses child behavioral health by strengthening financial stability and parenting among families in Uganda. Funded by the National Institute of Mental Health (NIMH), Suubi4Stronger Families is a five-year study that examines the mechanisms by which economic empowerment (EE) and multiple family group (MFG)-based family strengthening (FS) interventions targeting social, familial and context-specific drivers affect the mental health of children in mid-upper primary schools in Uganda.

This study utilizes a 3-arm cluster-randomized longitudinal design across 30 primary schools with 900 children (10-14 years). Specific aims of the study are: *Aim 1:* Examine the impact of economic empowerment (EE only), multiple family group-based family strengthening (MFG-based FS only), and combined EE + MFG-based FS on children's DBD symptoms and behavioral functioning; *Aim 2:* Test the influence of EE only, MFG-based FS only, and combined EE + MFG-based FS on family financial stability, parenting and protective family processes and perceptions related to help seeking on child behavioral health and functioning; and assess whether these change mechanism mediate intervention effects on DBD symptoms and behavioral functioning, and explore moderation by context-specific moderators of intervention effects; *Aim 3:* Qualitatively examine participants' experiences with each intervention arm. The interventions will be provided for 12 months; and assessments will occur at baseline, 12, 24 and 36 months.

Principal Investigators: Fred M. Ssewamala, PhD; Mary M. McKay, PhD

Project Team Members: Proscovia Nabunya, PhD; Ozge Sensoy Bahar, PhD; Shenyang Guo, PhD; Torsten Neilands, PhD (University of California – San Francisco); Abel Mwebembezi, PhD (Reach the Youth-Uganda); Noeline Nakasujja, PhD (Makerere University)

Study Coordinators: Florence Namuli, Herbert Migadde

SUUBI4STRONGER FAMILIES AT-A-GLANCE

- 900** Participants screened for recruitment – target reached
- 550** Participants recruited across 21 schools in 2023
- 242** Bank accounts opened for participants in 2023



SUUBI+ADHERENCE-R2 (2020-2025)

Study Overview

Funded by the Eunice Kennedy Shriver National Institutes of Child Health and Human Development (NICHD), the Suubi+Adherence-R2 study seeks to examine the long-term impact of the Suubi+Adherence intervention on HIV viral suppression and to explore the impact of the intervention on key HIV treatment adherence outcomes for youth living with HIV, including cognitive functioning and their ability to access and refill prescribed medication, adherence to prescribed daily medication routines, and their engagement in HIV care such as keeping medical appointments.

The study has the following specific aims: *Aim 1:* To examine the long-term impact of the *Suubi+Adherence* intervention on: HIV viral suppression (primary outcome) and to explore in secondary analyses the long-term impact of the intervention on key HIV treatment adherence outcomes for YLHIV. *Aim 2:* To elucidate the long-term effects of the *Suubi+Adherence* intervention on potential mechanisms of change. *Aim 3:* To qualitatively examine—prospectively and retrospectively—: a) multi-level factors affecting participants' maintenance of intervention benefits since *Suubi+Adherence* intervention initiation (prospectively); and b) participants' experiences with the intervention (retrospectively), including multi-level factors that may have influenced their engagement with the program, as well as their decision-making in regard to ART adherence. *Aim 4:* To examine the long-term cost-effectiveness of the *Suubi+Adherence* intervention.

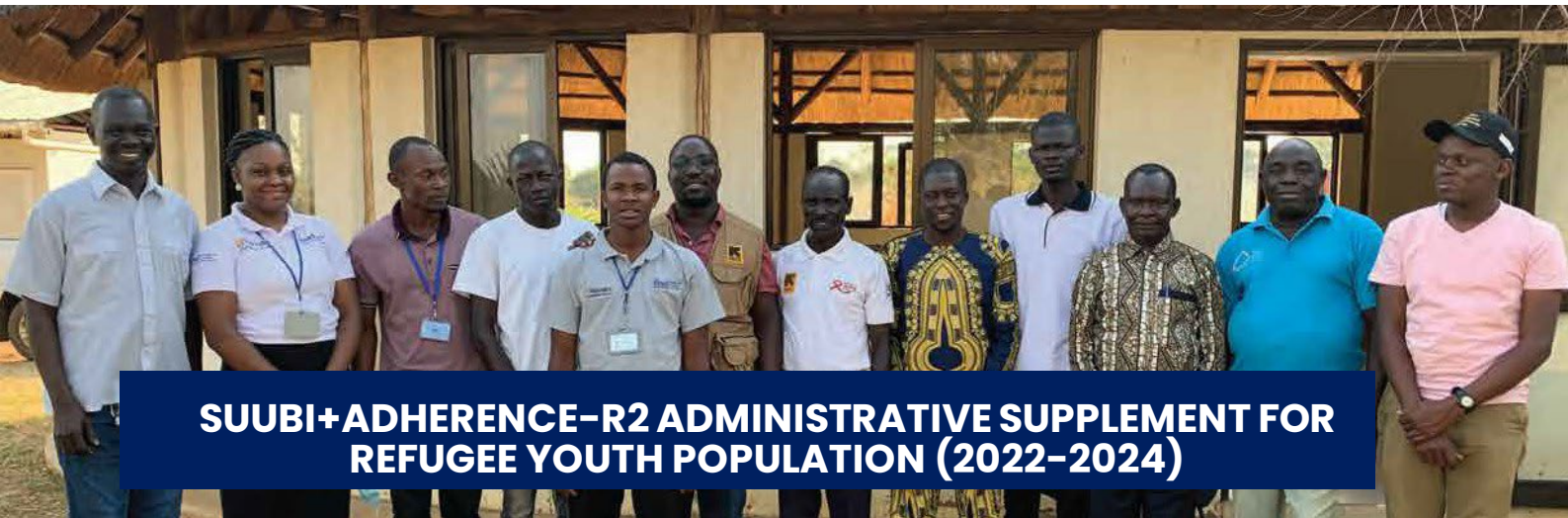
Principal Investigators: Fred M. Ssewamala, PhD; Ozge Sensoy Bahar, PhD; Proscovia Nabunya, PhD

Project Team Members: Rachel Brathwaite, PhD; Derek Brown, PhD; Shenyang Guo, PhD; Claude Mellins, PhD; John Santelli, PhD; April Denise Thames, PhD; Torsten Neilands, PhD; Abel Mwebembezi, PhD (Reach the Youth-Uganda)

Study Coordinators: Glorinah Namagwa; Samuel Kizito, MBChB

SUUBI+ADHERENCE-R2 AT-A-GLANCE

- 573** Participants recruited to date
- 512** Participants completed wave 8 assessments
- 507** Participants completed cognitive functioning tests in 2023
- 3** Manuscript published from study data in 2023



SUUBI+ADHERENCE-R2 ADMINISTRATIVE SUPPLEMENT FOR REFUGEE YOUTH POPULATION (2022-2024)

Study Overview

Awarded by the Eunice Kennedy Shriver National Institute of Child Health and Human Development (NICHD), this administrative supplement builds on the Suubi+Adherence-R2 study (2020-2025), examining the longitudinal impact of HIV treatment outcomes among youth living with HIV (YLHIV) and transitioning into young adulthood in Uganda. While the parent grant led by Principal Investigators Ssewamala, Sensoy Bahar, and Nabunya focuses on Ugandan YLHIV, it does not include the refugee youth population. Yet, refugee youth in Uganda are at increased risk of both HIV transmission and infection due to settlement in high HIV prevalence areas, lack of knowledge about sexual and reproductive health in general, limited access to life saving antiretroviral treatment (ART), and mental health challenges from exposure to trauma in their native countries.

This additional research component aims to recruit refugee youth living with HIV (RYLHIV) to understand factors around access to and utilization of HIV treatment and adherence to treatment, trauma-associated disorders, psychological functioning, and sexual decision-making, which will contribute to our understanding of the dual public health threats of HIV and mental health among vulnerable refugee youth in Uganda.

Specific aims of the study are: *Aim 1:* Examine the HIV viral suppression and explore the participants' ability to access and refill prescribed medication, adhere to prescribed daily medication routines, and engage in HIV care among refugee youth living with HIV; *Aim 2:* Assess economic stability, sexual risk-taking behavior, adherence self-efficacy; b) cognitive functioning; c) mental health functioning; and d) young adult transitions and social support among refugee youth living with HIV.

Principal Investigators: Fred Ssewamala, PhD; Nhial Tutlam, PhD

Project Team Members: Abel Mwebembezi, PhD (Reach the Youth-Uganda); Noeline Nakasujja, PhD (Makerere University), David Opi (International Rescue Commission-Uganda)

Study Coordinator: Isaac Kwesiga

SUUBI+ADHERENCE-R2 ADMINISTRATIVE SUPPLEMENT AT-A-GLANCE

- 2** New offices opened in Bidibidi and Arua, Northern Uganda
- 16** Participants recruited and completed baseline interviews



Suubi MHealth (2021–2026)

Study Overview

Funded by the National Institute of Mental Health (NIMH), Suubi-Mhealth is developing a mobile health intervention for use among Ugandan youth with comorbid HIV and depression taking into account their unique contextual, cultural, and developmental needs. The core of the Suubi-Mhealth intervention is based on cognitive-behavioral therapy (CBT) tenets found to improve depression and treatment adherence among individuals living with HIV.

This study builds on the pilot funding from Washington University's McDonnell International Scholar's Academy Global Incubator Seed Grant Program awarded to Nabunya and Cavazos-Rehg, in collaboration with Makerere University in Uganda—a McDonnell Partner. Given the many barriers to care experienced by Ugandan youth living with HIV, as well as the lack of access to trained providers, the Suubi-Mhealth intervention is a viable and sustainable approach for treating depression in this priority population.

The study's specific aims are; *Aim 1*: to develop and iteratively refine an intervention protocol for Suubi-Mhealth based on formative work to understand the needs of youths living with HIV; *Aim 2*: to explore the feasibility and acceptability of Suubi-Mhealth on a small scale to inform subsequent refinement; *Aim 3*: to test the preliminary impact of Suubi-Mhealth versus a waitlist control group on youths' outcomes, including depression and treatment adherence; and *Aim 4*: to examine barriers and facilitators for integrating Suubi-Mhealth into health care settings.

Principal Investigators: Proscovia Nabunya, PhD; Patricia Cavazos-Rehg, PhD; James Mugisha, PhD (Makerere University)

Project Team Members: Fred Ssewamala, PhD; Lindsey Filiatreau, PhD; Abel Mwebembezi, PhD (Reach the Youth-Uganda)

Study Coordinators: Olive Imelda Namuyaba; Claire Najjuuko

SUUBI M-HEALTH AT-A-GLANCE

- 22** Additional participants recruited for Phase I in 2023 (n=48)
- 16** Health care providers recruited for Phase I
- 30** Participants recruited for Phase II
- 78** Participants recruited for the study to date



ASSESSING THE FEASIBILITY OF ECONOMIC APPROACHES TO PREVENT SUBSTANCE USE AMONG ADOLESCENTS (2022–2024)

Study Overview

Few research studies have assessed alcohol and drug use among adolescents living with HIV in Uganda, yet this population is at higher risk for substance use; and substance use impedes adherence to anti-retroviral therapy, retention in care, and viral suppression. Family-based economic interventions have the potential to prevent substance use among youths living with HIV by reducing poverty and its associated mental health impacts, and also bolstering youths and their families' resources to overcome the challenges associated with HIV.

Funded by the National Institute on Alcohol Abuse and Alcoholism (NIAAA), this study examines the prevalence and consequences of substance use in a sample of 200 adolescents and youths (ages 18–24) seen at HIV clinics located in the fishing communities of southwestern Uganda. More specifically, the study has the following aims: *Aim 1:* to examine the prevalence and consequences of Adolescent alcohol and drug use (ADU) and identify the multilevel risk and resilience factors associated with ADU among them and; *Aim 2:* to explore the feasibility and short-term effects of an economic empowerment intervention on ADU among them.

Principal Investigators: *Rachel Brathwaite, PhD; and Massy Mutumba, PhD, (University of Michigan)*

Project Team Members: *Fred Ssewamala, PhD; Lindsey Filiatreau, PhD; Abel Mwebembezi, PhD (Reach the Youth-Uganda)*

Study Coordinators: *Betina Nabisere, Herbert Migadde, Sylvia Nannono*

ASSESSING THE FEASIBILITY OF ECONOMIC APPROACHES TO PREVENT SUBSTANCE USE AMONG ADOLESCENTS AT-A-GLANCE

2 Participants recruited

16 Manuscript published from study data in 2023



OBUVUMU (2022–2024)

Study Overview

Funded by the National Institute of Mental Health (NIMH), the Obuvumu Study is a mixed methods study that sets out to improve health services up-take for survivors of sexual violence. The study team seeks to understand the barriers and facilitators to using health services by survivors of sexual violence, which will inform a Discrete Choice Experiment in order to guide the co-design of a user-centered intervention.

The proposed Obuvumu (meaning “courage” in Luganda) study will innovatively address this need through the following specific aims: *Aim 1.* Conduct formative qualitative research to inform a discrete choice experiment (DCE) that will generate systematic information on health service utilization for female survivors of sexual violence in Uganda; *Aim 2.* Using a DCE approach, assess the factors that influence women’s decisions to seek services after experiencing sexual violence; *Aim 3:* Based on findings from the DCE, apply user-centered design principles to co-design an intervention that addresses barriers and preferences identified in Aims 1 and 2.

Findings from this study may help inform efforts to increase rates of reporting of sexual violence and improve reproductive health, mental health, and related health outcomes for women in Uganda, and more broadly in low-resource countries in sub-Saharan Africa and other regions where rates of sexual violence are high.

Principal Investigators: *Lindsay Stark, DrPH; Fred M. Ssewamala, PhD; Massy Mutumba, PhD (University of Michigan)*

Project Team Members: *Derek Brown, PhD; Rachel Brathwaite, PhD; Abel Mwebembezi, PhD (Reach the Youth-Uganda)*

Study Coordinators: *Dr. Raymond Atwebembere, MBChB; Gertrude Nabbosa, Betina Nabisere*

OBUVUMU AT-A-GLANCE

- 93** Participants recruited in 2023 (Total =433)
- 37** Village councils involved



Study Overview

The widespread misconceptions towards mental illness and mental health stigma among children negatively impact their health-seeking behaviors, self-esteem, and social inclusion. This fosters a social climate of stigma among youth, who are then reluctant to seek help for mental health issues. The use of visuals, when co-created with the target audience, can be effective communication tools to address mental health stigma, including in schools.

However, no such interventions exist in schools in Uganda. “Say No to Stigma-Round 2” is the second phase of Washington University’s Africa Initiative-funded study Say No to Stigma – Round 1, during which a set of visual solutions focused on mental health awareness and stigma was created in collaboration with primary school students in Uganda. During the meeting, students engaged in developing environmental signage, posters and comics related to mental health.

The second phase is funded by the Global Incubator SEED Grant from McDonnell International Scholars Academy at Washington University in St. Louis. The goal is to pilot test the impact of the visual solutions developed during Round 1 on increasing mental health awareness and reducing mental health stigma among children in primary schools.

Principal Investigators: *Ozge Sensoy Bahar, PhD, Penina Acayo Laker, MFA, and Proscovia Nabunya, PhD*

Project Team Members: *Noeline Nakasujja, PhD (Makerere University)*

Study Coordinator: *Scovia Nassazi, Sumayiya Nassanga*

SAY NO TO STIGMA R2 AT-A-GLANCE

- 2** Schools engaged
- 12** Boxes of chalk given to two schools
- 100** Participants were recruited in 2023



YOUTH HEALTH SMS – USING MOBILE TECHNOLOGY TO PREVENT HIV AND RELATED YOUTH HEALTH PROBLEMS (2020–2025)

Study Overview

Funded by the National Institute of Mental Health (NIMH), the “Youth Health SMS” (YHSMS) study examines the use of mobile technology to prevent HIV and related youth health problems: Sexual health, mental health, and substance use in southwest Uganda. This two-arm pilot randomized clinical trial is being conducted in secondary schools in the Southwestern region of Uganda. The study is being conducted in the schools participating in the Suubi4Her study and it is conducted in 2 phases. The first phase (2021) was conducted in 2 schools with 24 participants aged 15–19 years who had access to a phone.

In 2023, the study was able to realize its target of 200 participants as these were eventually recruited and ready for Phase II of the study. The study also completed the enrollment of 10 schools required for the second phase.

These participants accessed the study messages by dialing 161 for 5 days, after which they participated in focus group discussions and shared experiences on the study messages. The study has been working on refining the study messages based on the feedback from the Phase I FDGs and plans to recruit 200 participants for Phase II. The participants assessed 5 categories of messages, which include messages about PrEP, depression, anxiety, messages about HIV testing, and alcohol.

Principal Investigator: *Philip Kreniske, PhD (Columbia University)*

Project Team Members: *Fred Ssewamala, PhD, Abel Mwebembezi, PhD (Reach the Youth-Uganda), Strong Minds and VIAMO*

Study Coordinator: *Olive Imelda Namuyaba*

YOUTH HEALTH SMS AT-A-GLANCE

- 200** Participants were recruited in 2023
- 10** Secondary schools were recruited
- 1** Manuscript published from study data in 2023

2023 ICHAD Speaker Series



Learning from Early Career Investigators:
Women's Empowerment, Child and
Adolescent HIV, and Refugee Mental Health
in Sub-Saharan Africa

Panelists: Dr. Nhial Tutlam, Josephine
Nabayinda, Dr. Samuel Kizito

Tuesday, May 2, 2023

Moderator: Dr. Fred Ssewamala



ICHAD Speaker Series Special Edition: Visiting
ACHIEVE Global Health Scholar Presentations

Panelists: Dr. Ronald Olum, Dr. Mamadu Baldeh,
and Dr. Joyce Nankumbi

Tuesday, May 9, 2023

Moderator: Dr. Proscovia Nabunya

The Importance of Cognitive Screening and
Psychosocial Assessment in Medically
Compromised Populations

Tuesday, April 11, 2023

April Thames, PhD

Unlocking Potential: Holistic Approaches to
Supporting Adolescent Mental Health in
School Settings

Tuesday, December 5, 2023

Massy Mutumba, PhD

Stepped Care for Women's Mental Health in
Primary Care in Tajikistan

Tuesday, February 14, 2023 - Virtual

Stevan M. Weine, M.D

Interventions to Address the Mental Health
Impact of War Trauma among Youth from
Refugee Families Resettled in the United
States and Those Living in Refugee
Settlements in Northern Uganda

Tuesday, September 12 2023

Nhial Tutlam, PhD

Leveraging Advances in Data Science and
Artificial Intelligence to Promote Public
Health in Africa

Wednesday, November 15, 2023

Agnes Kiragga, PhD



ichad
Brown School

SECURING OUR
CHILDREN'S
FUTURE TODAY

Washington
University in St. Louis

**2024 Forum on Child and Adolescent Global
Health Research and Capacity Building**

Masaka - Uganda

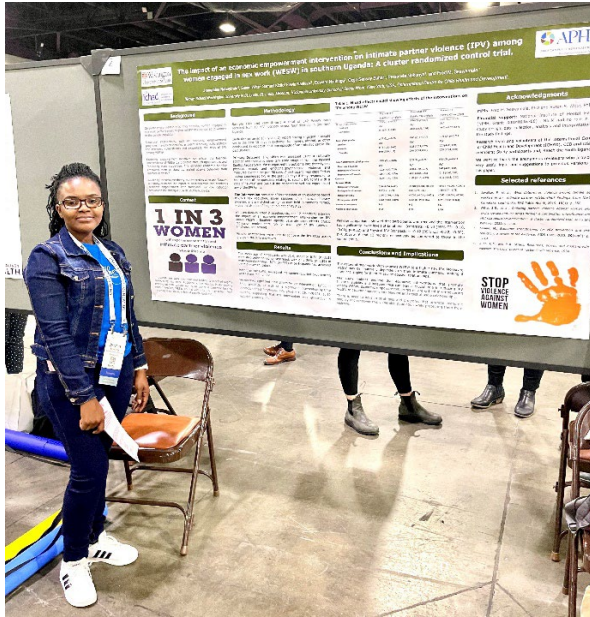
June 17-26, 2024

REGISTER HERE:



<http://bit.ly/3w3b8VH>

Conference Presentations



ICHAD research assistants, directors, and collaborators presented study findings at international conferences which included the 27th Annual Conference of the Society for Social Work and Research (SSWR) and the 2023 American Public Health Association.

27th Annual Conference of the Society for Social Work and Research (SSWR)

Title	Authors
HIV Shame and the Mental Health Functioning of Adolescents Living with HIV: Findings from a Pilot Study in Uganda	Nabunya P, Namuwonge F, Sensoy Bahar O, Namatovu P, Ssentumbwe V, Migadde H, Nsubuga E, Ssewamala FM
Stigma by Association, Parenting Stress and the Mental Health of Caregivers of Adolescents Living with HIV in Uganda	Nabunya P, Namuwonge F, Sensoy Bahar O, Namatovu P, Ssentumbwe V, Migadde H, Nsubuga E, Namuyaba OI, Ssewamala FM
Relationship Between Child Emotional and Behavior Difficulties and The Mental Health of Caregivers of Adolescents Living with HIV	Nabunya P, Byansi W, Sensoy Bahar O, Namuwonge F, Namatovu P, Ssentumbwe V, Migadde H, Najjuuko C, Ssewamala FM
"I Expected Little, Although I Learned a Lot": Perceived Benefits of Participating in HIV Risk Reduction Sessions Among Women Engaged in Sex Work in Uganda	Sensoy Bahar, O., Nabunya, P., Nabayinda, J., Witte, S., Kiyingi, J., Jennings Mayo-Wilson L, Filippone P, Yang LS, Nakigudde J, Tozan Y, & Ssewamala FM
The Prevalence and Associated Risk and Protective Factors of Psychological Difficulties and Prosocial Behavior among Children Orphaned and Made Vulnerable by AIDS in southern Uganda	Tutlam N, Byansi W, Brathwaite R, Nabunya P, Sensoy Bahar O, Namuwonge F, Nattabi J, Ssewamala FM
Patterns of and Factors Associated with Mental Health Service Utilization Among School-Going Adolescent Girls in Southwest Uganda	Byansi W, Namuli F, Namuwonge F, Damulira C, Namuyaba O, Najjuuko C, Nabunya P, Ssentumbwe V, Ssewamala FM

Conference Presentations

27th Annual Conference of the Society for Social Work and Research (Continued)

The Effect of Family Responsibility on Self-Reported Adherence to ART among Adolescents Perinatally Infected with HIV in Uganda: A Mediation Analysis	Nabunya P, Kizito S, Ssewamala FM
"I Decided in My Heart I Have to Complete the Sessions": The Experiences of Women Engaged in Sex Work with an Evidence-Based HIV Risk Reduction Intervention in Uganda	Sensoy Bahar O, Nabunya P, Nabayinda J, Witte S, Kiyingi J, Nsubuga E, Schriger S, Nattabi J, Jennings Mayo-Wilson L, Nakigudde J, Tozan Y, & Ssewamala FM
Family Support, Social Support, And Psychosocial Wellbeing of High School Adolescent Girls In Uganda	Ssentumbwe V, Magorokosho N, Namuwonge F, Kizito S, Namatovu P, Nabayinda J, Nabunya P, Sensoy Bahar O, Ssewamala FM
Depression and Parental Communication Are Associated with Increased Sexual Risk-Taking Intentions Among Adolescents Living with HIV in Uganda	Kizito S, Nabayinda J, Kiyingi J, Namuwonge F, Nabunya P, Sensoy Bahar O, Ssentumbwe V, Magorokosho N, and Ssewamala FM
Covid-19 Related Experiences and the Emotional and Cognitive Wellbeing of Mental Health Among Adolescent Girls in Southern Uganda October 26, 2022	Magorokosho N, Ssentumbwe V, Kizito S, Nabunya P, Kiyingi J, Nabayinda J, Namuwonge F, Namatovu P, Sensoy Bahar O, Ssewamala FM
Does Prior Asset Ownership Influence Sexual Risk-Taking Behaviors Among Women Engaged in Sex Work? A Mediation Analysis	Nabayinda J, Kizito S, Witte S, Nabunya P, Kiyingi J, Namuwonge F, Nsubuga, E, Sensoy Bahar O, Jennings Mayo-Wilson, L, Yang LS, Nattabi J, Magorokosho N, and Ssewamala FM
Predictors of Likelihood of Mobility Among Women Engaged in Commercial Sex Work in Uganda	Kiyingi J, Witte, S, Nabunya P, Nsubuga, E, Sensoy Bahar O, Jennings Mayo-Wilson L, Kizito S, Nattabi J, Nabayinda J, Ssewamala FM

2023 Annual Meeting and Expo of the American Public Health Association

Title	Presenter
A Family-Based Economic Empowerment Intervention Improves Viral Suppression and Mental Health Outcomes in Adolescents Living With HIV In Uganda: Findings From A Cluster-Randomized Controlled Trial	Dr. Samuel Kizito
The Impact of A Combination Intervention on Intimate Partner Violence Among Women Engaged in Commercial Sex Work in Southern Uganda: A Cluster Randomized Control Trial	Josephine Nabayinda
Self-Esteem and Self-Concept as Predictors of Life Satisfaction and Attitudes Toward School Among Adolescent Girls: Findings From a Pilot Study in Ghana	Portia Nartey
Access to Medical Care Among Women Engaged in Commercial Sex Work in Southern Uganda	Joshua Kiyingi
Costing of a Combination Intervention (Kyaterekera) Addressing Sexual Risk-Taking Behaviors Among Vulnerable Women in Southwestern Uganda	Dr. Yesim Tozan

Meet the ICHAD US Team



Fred M. Ssewamala, PhD
Founding Director



Proscovia Nabunya, PhD
Co-Director



Ozge Sensoy Bahar, PhD
Co-Director



Laura Peer, MPH
Associate Director of
Capacity Building



Nhial Tutlam, PhD
Associate Director of
Research



Bethel Mandefro, MA
Center Manager



Chelsea Hand-Sheridan
Training Programs
Manager



Mathias Ssemenda
Dissemination and
Communication
Manager



Rachel Brathwaite, PhD
Senior Data Analyst
and Faculty Affiliate



Vicent Ssentumbwe
Data and Study
Coordinator



Portia Nartey
PhD Student, Research
Associate



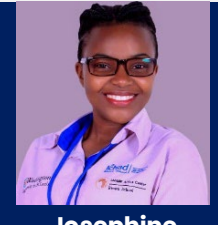
Flavia Namuwonge
PhD Student,
Research Associate



Joshua Kiyingi
PhD Student,
Research Associate



Samuel Kizito
PhD Student,
Research Associate



Josephine Nabayinda
PhD Student,
Research Associate



Rashida Namirembe
PhD Student,
Research Associate



Jennifer Nattabi
PhD Student,
Research Associate



Ted Liyew
PhD Student,
Research Assistant



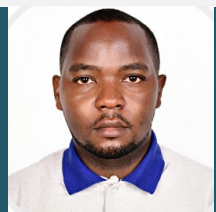
Georgewilliam Kalibbala
Graduate Research
Assistant



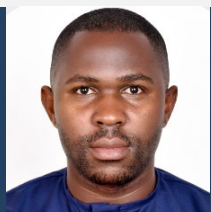
Fatumah Nakabuye
Graduate Research
Assistant



Scovia Nassazi
Graduate Research
Assistant



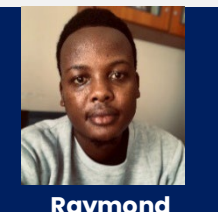
Edward Nsubuga
Graduate Research
Assistant



Sulaiti Mutebi
Graduate Research
Assistant



Francis Ssemuju
Graduate Research
Assistant



Raymond Atwebembere
Graduate Research
Assistant



Meet the ICHAD Uganda Team



Sarah Namutebi
Financial Controller



Ritah Barungi
Human Resource
Director



Sanyu Nakayita
Center Manager



Phionah Namatovu
Data Director,
Community and
Dissemination



Anita Kabarambi
Research Director



Allan Mugarura
Senior IT Manager &
Study Coordinator



Richard Bwogi
IT Manager &
Deputy Study
Coordinator



**Rebecca
Walugembe**
Training Programs
Coordinator &
Welfare Manager



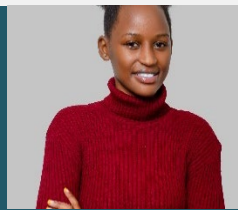
Milly Nabulime
Accounts Supervisor



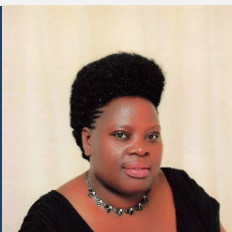
Zaufah Namatovu
Accounts Assistant



Elizabeth Mugabi
Accounts Assistant



**Joan Teddy
Nalukwago**
Accounts Assistant



Jane Namulindwa
Transport Officer /
Research Assistant



**Olive Imelda
Namuyaba**
Assist. Research
Director/Study
Coordinator



Julian Nalutaaya
Study Coordinator



Isaac Kwesiga
Ag. Study Coordinator



Herbert Migadde
Study Coordinator



Samiri Jamiru
Study Coordinator



Francis Matovu
Acting Study
Coordinator



Sylvia Nannono
Acting Study
Coordinator



Meet the ICHAD Uganda Team



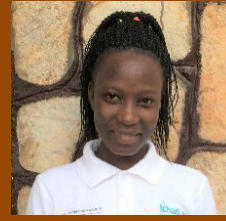
Betina Nabisere
Acting Study
Coordinator/MISCD



Gloriam Namagwa
Study Coordinator
& IT Support



Kennedy Ntambi
Asst. Study
Coordinator



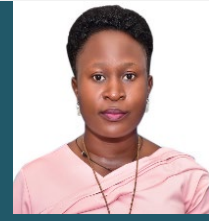
Annet Nakeeya
Deputy Study
Coordinator



Flavia Nanteza
Assist. Study
Coordinator



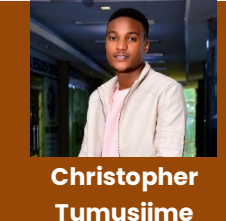
Gertrude Nabosa
Deputy Study
Coordinator



Florence Namuli
MISCD



**Bunkedeko Ivan
Musisi**
Research Assistant/
Data Clerk



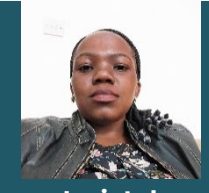
**Christopher
Tumusiime**
Research Assistant/
Data Clerk



Anita Nambogo
Research Assistant/
Data Clerk



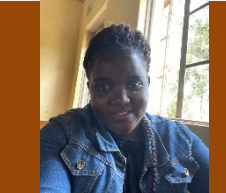
Madrine Nakisekka
Research Assistant/
Data Clerk



**Jacintah
Namuyomba
Jascent**
Research Assistant/
Records Assistant



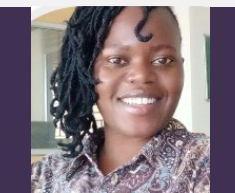
**Nicholas Adrian
Ssempijja**
Research
Assistant/Qualitative
Data



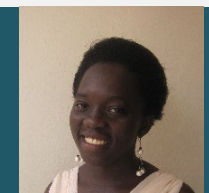
Anita Nagawa
Research
Assistant/Qualitative
Data



Sumaiya Nassanga
Research Assistant



Sophie Nanziri Kizito
Research Assistant



**Medress
Nansubuga**
Research Assistant



Marius Kyeyune
Research Assistant



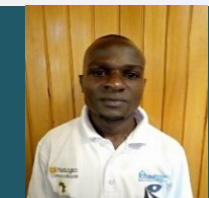
Erisa Walukagga
Research Assistant



**Rose Bridget
Nantambi**
Research Assistant



Alex Ssempewo
Research Assistant



Moses Bongole
Project Lead Driver



Sam Ssekiranda
Project
Driver/Research
Assistant



Nicholas Kyanda
Project
Driver/Research
Assistant



Moses Wafula
Project
Driver/Research
Assistant



Meet the ICHAD Uganda Team



Fred Ssenyonjo
Project
Driver/Research
Assistant



Ivan Menya
Project
Driver/Research
Assistant



Peter Ssemakula
Project Driver
/Research Assistant



James Zirimu
Project Driver
/Research Assistant



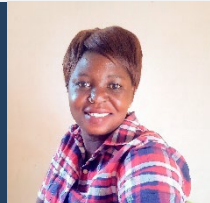
Joanita Nakiwala
Administrative
Assistant/Research
Assistant



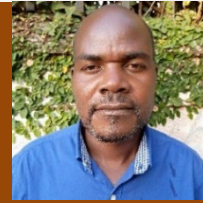
Meron Bakandinda
Administrative
Assistant/Research
Assistant



Teopista Nantongo
Administrative
Assistant



Night Rose
Administrative
Assistant/Research
Assistant



Herbert Kasaija
Research Assistant/
Office Messenger



Fahim Lutaaya
Project Driver



David Mayengo
Project Driver



**George William
Kalange**
Project Driver



Francis Ssebula
Counselor

Berna Nankabirwa
House Keeper



Daniel Ssesande
Security Personnel



Jackson Malumba
Security Personnel

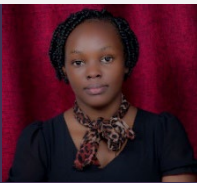


Augustine Kiiza
Security Personnel



Abdul Rukinda
Security Personnel

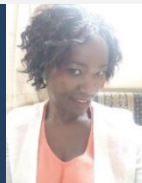
Part-time Staff



Jacqueline Nanteza
Part time Accounts, HR
and MIS/SCDA staff



Matina Nakanwagi
Interviewer



Scovia Wazemba
Counselor



Ronald Mutebi
Interviewer



Sarah Nanono

Medi Kisitu
Interviewer

Robinah Namatovu
Interviewer

Grace Kigozi
Consultant

**Maria Florence
Nassuna**
Student Intern

Shanitor Namutebi
Student Intern



Faculty Affiliates/Collaborators



Penina Acayo Laker, MFA
Washington University in St. Louis



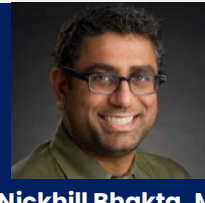
Benjamin Akande, PhD
Diversity & Inclusion
Stifel Financial Group



Ana Baumann, PhD
Washington University in St. Louis



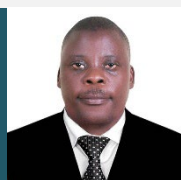
Jeanne Brooks-Gunn, PhD
Columbia University



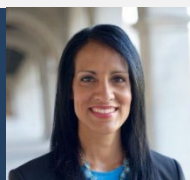
Nickhill Bhakta, MD
St. Jude Children's Research Hospital



Derek Brown, PhD
Washington University in St. Louis



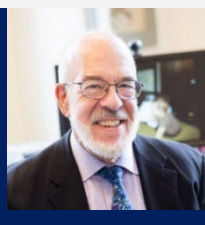
William Byansi, PhD
Boston College



Patricia Cavazos-Rehg, PhD
Washington University School of Medicine



Amy Conroy, PhD
University of California San Francisco



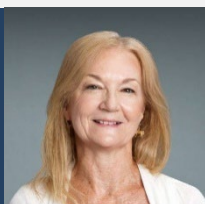
Irv Garfinkel, PhD
Columbia University



Laura Gauer Bermudez, PhD
Evidence and Learning
Global Fund to End Modern Slavery



Shenyang Guo, PhD
Washington University in St. Louis



Kimberly Hoagwood, PhD
New York University



Philip Hong, PhD
Loyola University of Chicago



Habiba Ibrahim, PhD
Saint Catherine University



Leyla Ismayilova, PhD
University of Chicago



Juliet Iwelunmor, PhD
St. Louis University



Larissa Jennings Mayo-Wilson, PhD MHS
University of Carolina at Chapel Hill



Kimberly Johnson, PhD
Washington University in St. Louis



Njeri Kagotho, PhD
The Ohio State University



Faculty Affiliates/Collaborators



Leyla Karimli, PhD
University of California Los Angeles



Mary McKay, PhD
Washington University in St. Louis



Claude Mellins, PhD
Columbia University



Lynn Michalopoulos, PhD
University of Maryland



Massy Mutumba, PhD
University of Michigan



Mitra Naseh, PhD
Washington University in St. Louis



Tor Neilands, PhD
University of California San Francisco



Byron Powell, PhD
Washington University in St. Louis



Marion Riedel, PhD
New York University



John Santelli, PhD
Columbia University



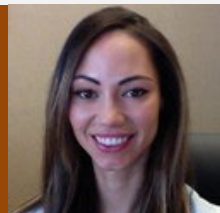
Julia Shu-Huah Wang, PhD
University of Hong Kong



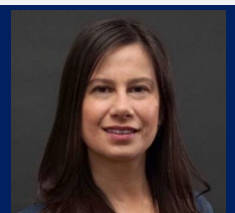
Elizabeth Sperber, PhD
University of Denver



Lindsay Stark, DrPH
Washington University in St. Louis



April Thames, PhD
University of California, Los Angeles



Yesim Tozan, PhD
New York University



Jean-Francois Trani, PhD
Washington University in St. Louis



Jane Waldfogel, PhD
Columbia University



Susan Witte, PhD
Columbia University



Darejan (Daji) Dvalishvili, MD
Virginia Commonwealth University



Lindsey Filiatreau, PhD
Washington University in St. Louis



Global Affiliates



Emmanuel Asampong, PhD
University of Ghana



Alice Boateng, PhD
University of Ghana



Mavis Dako-Gyeke, PhD
University of Ghana



Abdallah Ibrahim, DrPH
University of Ghana



Joseph Kagaayi, MBChB, PhD
Rakai Health Sciences Program



Joseph Kato Bakulu, Rev. Fr.
Catholic Diocese of Masaka



Godfrey Kigozi, MBChB, MPH
Rakai Health Sciences Program



Kingsley Kumbelim
BasicNeeds-Ghana



Simba Machingaidze
ChildFund International-Zambia



Fredrick Makumbi, PhD
Makerere University



James Mugisha, PhD
Kyambogo University



Barbara Mukasa, MBChB
Mildmay-Uganda



Abel Mwebembezi, PhD
Reach the Youth-Uganda



Noeline Nakasujja, MBChB, PhD
Makerere University



Gertrude Nakigozi, MBChB, PhD
Rakai Health Sciences Program



Janet Nakigudde, PhD
Makerere University



Nixon Niyonzima, MBChB, PhD
Uganda Cancer Institute



Timothy Opobo, MSC
Africhild, and ChildFund-Uganda



Joseph Osei
BIBIR-Ghana



Peter Yaro, MPhil
BasicNeeds-Ghana

Publications

1. Brathwaite, R., Magorokosho, N., Namuwonge, F., Tutlam, N., Neilands, T. B., McKay, M. M., & Ssewamala, F. M. (2023). Typology and correlates of parental stress among caregivers of children with DBDs in low-resourced communities in Uganda. *PLOS Global Public Health*, 3(8): e0002306. <https://doi.org/10.1371/journal.pgph.0002306>
2. Brathwaite, R., Mutumba, M., Nanteza, J., Filiatreau, L.M., Migadde, H., Namatovu, P., Nabisere, B., Mugisha, J., Mwebembezi, A. and Ssewamala, F.M. (2023). Assessing the feasibility of economic approaches to prevent substance abuse among adolescents: protocol for a mixed methods study. *JMIR Research Protocols*, 12(1), e46486. <https://doi.org/10.2196/46486>
3. Brathwaite, R., Namuwonge, F., Magorokosho, N., Tutlam, N., Neilands, T. B., Namirembe, R., Ssentumbwe, V., & Ssewamala, F. M. (2023). Impact of Economic and Family Intervention on Adolescent Girls' Education Performance, School Absenteeism, and Behavior in School: The Suubi4Her Study. *Journal of Adolescent Health*, 74(2): 340-349. <https://doi.org/10.1016/j.jadohealth.2023.08.043>
4. Brathwaite, R., Sensoy Bahar, O., Mutumba, M., Byansi, W., Namatovu, P., Namuwonge, F., Neilands, T. B., McKay, M. M., Hoagwood, K. E., & Ssewamala, F. M. (2023). Short-Term Impact of "Amaka Amasanyufu" Multiple Family Group Intervention on Mental Health Functioning of Children With Disruptive Behavior Disorders in Uganda. *Journal of the American Academy of Child & Adolescent Psychiatry*, 62(7), 777-790. <https://doi.org/10.1016/j.jaac.2022.12.028>
5. Byansi, W., Ssewamala, F. M., Neilands, T. B., Mwebembezi, A., & Nakigozi, G. (2023). Patterns of and Factors Associated With Mental Health Service Utilization Among School-Going Adolescent Girls in Southwestern Uganda: A Latent Class Analysis. *Journal of Adolescent Health*, 72(5): S24-S32. <https://doi.org/10.1016/j.jadohealth.2022.09.037>
6. Byansi, W., Howell, T. H., Filiatreau, L. M., Nabunya, P., Kaiser, N., Kasson, E., Ssewamala, F. M., & Cavazos-Rehg, P. (2023). Sexual Health Behaviors and Knowledge Among Ugandan Adolescent Girls: Implications for Advancing Comprehensive Sexual Health Education Technology. *Child & Youth Care Forum*, 1-21. <https://doi.org/10.1007/s10566-023-09730-3>
7. Filiatreau, L. M., Tutlam, N., Brathwaite, R., Byansi, W., Namuwonge, F., Mwebembezi, A., Sensoy Bahar, O., Nabunya, P., Neilands, T. B., Cavazos-Rehg, P., McKay, M., & Ssewamala, F. M. (2023). Effects of a Combination Economic Empowerment and Family Strengthening Intervention on Psychosocial Well-being Among Ugandan Adolescent Girls and Young Women: Analysis of a Cluster Randomized Controlled Trial (Suubi4Her). *Journal of Adolescent Health*, 72(5): S33-S40. <https://doi.org/10.1016/j.jadohealth.2022.11.250>
8. Jennings Mayo-Wilson, L., Peterson, S.K., Kiyangi, J., Nabunya, P., Sensoy Bahar, O., Yang, L.S., Witte, S.S. Ssewamala, F.M. (2023). Examining Cash Expenditures and Associated HIV-Related Behaviors Using Financial Diaries in Women Employed by Sex Work in Rural Uganda: Findings from the Kyaterekera Study. *International Journal Environmental Research and Public Health*, 20, 5612. <https://doi.org/10.3390/ijerph20095612>
9. Karimli, L., Nabunya, P., Ssewamala, F. M., & Dvalishvili, D. (2023). Combining Asset Accumulation and Multifamily Group Intervention to Improve Mental Health for Adolescent Girls: A Cluster-Randomized Trial in Uganda. *Journal of Adolescent Health*. <https://doi.org/10.1016/j.jadohealth.2023.08.012>
10. Karimli, L., Ssewamala, F. M., & Neilands, T. B. (2023). The impact of poverty-reduction intervention on child mental health mediated by family relations: Findings from a cluster-randomized trial in Uganda. *Social Science & Medicine*, 116102. <https://doi.org/10.1016/j.socscimed.2023.116102>
11. Kiyangi, J., Witte, S. S., Nabunya, P., Nsubuga, E., Sensoy Bahar, O., Mayo-Wilson, L. J., Kizito, S., Nattabi, J., Nabayinda, J., & Ssewamala, F. M. (2023). Predictors of mobility among women engaged in commercial sex work in Uganda using generalized estimating equations model. *International Journal of STD & AIDS*, 095646242311679. <https://doi.org/10.1177/09564624231167910>
12. Kizito, S., Nabayinda, J., Neilands, T. B., Kiyangi, J., Namuwonge, F., Damulira, C., Nabunya, P., Nattabi, J., & Ssewamala, F. M. (2023). A Structural Equation Model of the Impact of a Family-Based Economic Intervention on Antiretroviral Therapy Adherence Among Adolescents Living with HIV in Uganda. *Journal of Adolescent Health*, 72(5), S41-S50. <https://doi.org/10.1016/j.jadohealth.2022.12.012>
13. Kizito, S., Nabunya, P., & Ssewamala, F. M. (2023).

- Enhancing Adherence to Antiretroviral Therapy Among Adolescents Living With HIV Through Group-Based Therapeutic Approaches in Uganda: Findings From a Pilot Cluster-Randomized Controlled Trial. *Journal of Pediatric Psychology*, 48(11), 907-913.
<https://doi.org/10.1093/jpepsy/jsad081>
14. Kizito, S., Namuwonge, F., Nabayinda, J., Nabunya, P., Nattabi, J., Sensoy Bahar, O., Kiyingi, J., Magorokosho, N., & Ssewamala, F. M. (2023). Using Hierarchical Regression to Examine the Predictors of Sexual Risk-Taking Attitudes among Adolescents Living with Human Immunodeficiency Virus in Uganda. *Journal of Adolescent Health*, 73(2): 244-251.
<https://doi.org/10.1016/j.jadohealth.2023.02.034>
 15. Nabayinda, J., Kizito, S., Namirembe, R., Nsubuga, E., Nabunya, P., Sensoy Bahar, O., Kiyingi, J., Nattabi, J., Namuwonge, F., Mayo-Wilson, L.J., Witte, S., and Ssewamala, F.M. (2023). Correlates of Intimate Partner Violence Among Young Women Engaged in Sex Work in Southern Uganda. *Journal of Interpersonal Violence*, 38(19-20): 10749-10770.
<https://doi.org/10.1177/08862605231175908>
 16. Nabayinda, J., Kizito, S., Ssentumbwe, V., Namatovu, P., Sensoy Bahar, O., Damulira, C., Nabunya, P., Kiyingi, J., Namuwonge, F., Mwebembezi, A., McKay, M. M., & Ssewamala, F. M. (2023). The Relationship Between Family Cohesion and Depression Among School-Going Children With Elevated Symptoms of Behavioral Challenges in Southern Uganda. *Journal of Adolescent Health*, 72(5): S11-S17.
<https://doi.org/10.1016/j.jadohealth.2022.12.016>
 17. Nabayinda, J., Namirembe, R., Kizito, S., Nsubuga, E., Nabunya, P., Sensoy Bahar, O., Magorokosho, N., Kiyingi, J., Nattabi, J., Tozan, Y., Jennings Mayo-Wilson, L., Mwebembezi, A., Witte, S. S., & Ssewamala, F. M. (2023). Correlates of Intimate Partner Violence Among Young Women Engaged in Sex Work in Southern Uganda. *Journal of Interpersonal Violence*, 38(19-20): 10749-10770.
<https://doi.org/10.1177/08862605231175908>
 18. Nabunya, P., Byansi, W., Bahar, O. S., Namuwonge, F., & Atwebembere, R. (2023). Emotional and Behavior Difficulties and the Mental Health of Caregivers of Adolescents Living with HIV. *J Journal of Child and Family Studies*, 32(12): 3766-3774.
<https://doi.org/10.1007/s10826-023-02609-w>
 19. Nabunya, P., Namuwonge, F., Sensoy Bahar, O., Ssentumbwe, V., Migadde, H., Mugisha, J., & Ssewamala, F. M. (2023). Stigma by Association, Parenting Stress, and the Mental Health of Caregivers of Adolescents Living With HIV in Uganda. *Journal of Adolescent Health*, 72(5), S18-S23.
<https://doi.org/10.1016/j.jadohealth.2022.08.017>
 20. Nabunya, P., Samuel, K., & Ssewamala, F. M. (2023). The effect of family support on self-reported adherence to ART among adolescents perinatally infected with HIV in Uganda: A mediation analysis. *Journal of Adolescence*, 95(4), 834-843.
<https://doi.org/10.1002/jad.12157>
 21. Nabunya, P., Sensoy Bahar, O., Neilands, T. B., Nakasujja, N., Namatovu, P., Namuwonge, F., Mwebembezi, A., & Ssewamala, F. M. (2023). Bridges Round 2: A study protocol to examine the longitudinal HIV risk prevention and care continuum outcomes among orphaned youth transitioning to young adulthood. *PloS One*, 18(5), e0284572.
<https://doi.org/10.1371/journal.pone.0284572>
 22. Namuwonge, F., Kizito, S., Ssentumbwe, V., Kabarambi, A., Magorokosho, N. K., Nabunya, P., Namuli, F., Namirembe, R., & Ssewamala, F. M. (2023). Peer Pressure and Risk-Taking Behaviors Among Adolescent Girls in a Region Impacted by HIV/AIDS in Southwestern Uganda. *Journal of Adolescent Health*, 74(1): 130-139.
<https://doi.org/10.1016/j.jadohealth.2023.08.006>
 23. Nartey, P., Sensoy Bahar, O., & Nabunya, P. (2023). A review of the cultural gender norms contributing to gender inequality in Ghana: An ecological systems perspective. *Journal of International Women's Studies*, 25(7): 1-17.
<https://vc.bridgew.edu/jiws/vol25/iss7/14>
 24. Nattabi, J., Nabunya, P., Kizito, S., Nabayinda, J., Kiyingi, J., Ssewamala, F.M. (2023). The Impact of Parent-Adolescent Communication on Reduction of Sexual Risk Possibility Among Adolescents: Findings from the Suubi-Maka Study. *Archives of Sexual Behavior*, 52(8): 3521-3530.
<https://doi.org/10.1007/s10508-023-02639-x>
 25. Sensoy Bahar, O., Byansi, W., Nabayinda, J., Kiyingi, J., Namatovu, P., Embaye, F., McKay, M. M., Hoagwood, K., & Ssewamala, F. M. (2023). "I decided to participate... because I saw it as benefiting our community and families": a qualitative study of lay providers' experiences with delivering an evidence-based mental health intervention for families in Uganda. *International*

- Journal of Mental Health Systems, 17(1), 24.
<https://doi.org/10.1186/s13033-023-00593-8>
26. Sensoy Bahar, O., Nabunya, P., Namuwonge, F., Samtani, S., Ssentumbwe, V., Namuli, F., Magorokosho, N. and Ssewamala, F.M. (2023). "It gives you a road map of what to do to solve your problems": acceptability of a combination HIV prevention intervention among adolescent girls in Uganda. *BMC Public Health*, 23(1),1-17.
<https://doi.org/10.1186/s12889-023-15083-2>
 27. Ssewamala, F. M., Brathwaite, R., & Neilands, T. B. (2023). Economic empowerment, HIV risk behavior, and mental health among school-going adolescent girls in Uganda: Longitudinal cluster-randomized controlled trial, 2017–2022. *American Journal of Public Health*, 113(3): 306–315.
<https://doi.org/10.2105/AJPH.2022.307169>
 28. Ssewamala, F. M., Brathwaite, R., Sensoy Bahar, O., Namatovu, P., Neilands, T. B., Kiyingi, J., Huang, K. Y., & McKay, M. M. (2023). The Post-intervention Impact of Amaka Amasanyufu on Behavioral and Mental Health Functioning of Children and Adolescents in Low-Resource Communities in Uganda: Analysis of a Cluster-Randomized Trial From the SMART Africa-Uganda Study (2016–2022). *Journal of Adolescent Health*, 72(5), S3–S10.
<https://doi.org/10.1016/j.jadohealth.2022.09.035>
 29. Ssewamala, F. M., Saucedo, J. A., Brathwaite, R., Neilands, T. B., Nabunya, P., Brown, D., Sensoy Bahar, O., Namuwonge, F., Nakasujja, N., Mugarura, A., Mwebembezi, A., Nartey, P., Mukasa, B., & Gwadz, M. (2023). Suubi+Adherence4Youth: a study protocol to optimize the Suubi intervention for Adherence to HIV treatment for youth living with HIV in Uganda. *BMC Public Health*, 23(1),717.
<https://doi.org/10.1186/s12889-023-15564-4>
 30. Sunyoung Yang, L., Witte, S. S., Kiyingi, J., Nabayinda, J., Nsubuga, E., Nabunya, P., Sensoy Bahar, O., Jennings Mayo-Wilson, L., & Ssewamala, F. M. (2023). Conducting high-frequency data collection in low-resource settings: Lessons from a financial diary study among women engaged in sex work in Uganda. *Journal of Human Behavior in the Social Environment*, 1-14.
<https://doi.org/10.1080/10911359.2023.2229404>
 31. Tutlam, N. T., Filiatreau, L. M., Byansi, W., Brathwaite, R., Nabunya, P., Sensoy Bahar, O., Namuwonge, F., & Ssewamala, F. M. (2023). The impact of family economic empowerment intervention on psychological difficulties and prosocial behavior among AIDS-orphaned children in southern Uganda. *Journal of Adolescent Health*, 72(5), S51–S58.
<https://doi.org/10.1016/j.jadohealth.2023.01.002>

For more information, visit the ICHAD website by scanning the code below.



